



Specification

CLAA070LCOJCT

7.0" / 800x480 / TTL / LED / TOUCH

Version February 2008

CONTENTS

1. OVERVIEW	3
2. ABSOLUTE MAXIMUM RATINGS	4
3. ELECTRICAL CHARACTERISTICS	5
3.1 TFT LCD	5
3.2 TFT-LCD Current Consumption.....	6
3.3 Power · Signal sequence.....	6
4. INTERFACE CONNECTION	7
4.1 CN1.....	7
4.2 CN2.....	8
5. INPUT SIGNAL(DE ONLY MODE)	9
5.1 Timing Specification.....	9
5.2 Timing sequence(Timing chart)	9
5.4 Color Data Assignment.....	11
6. CHARACTERISTIC OF TOUCH PANEL	12
6.1 Basis characteristic	12
6.2 Design guideline for Touch-Panel	12
6.3 Circuit Diagram	12
7. BLOCK DIAGRAM	13
8. MECHANICAL DIMENSION	14
8.1 Front Side	14
8.2 Rear Side.....	15
9. OPTICAL CHARACTERISTICS	16
10. RELIABILITY TEST	18
10.1. Temperature and humidity	18
10.2. Shock and Vibration	18
10.3 Judgment standard.....	18

1. OVERVIEW

CLAA070LC0JCT is 7" color TFT-LCD(Thin Film Transistor Liquid Crystal Display)module which integrates Touch–Screen.Composed of LCD panel,driver ICs,control circuit,and LED backlight.

The 7.0"screen produces a high resolution image that is composed of 800×480 pixel elements in a stripe arrangement.Display 262K colors by 6 Bit R.G.B signal input.

General specifications are summarized in the following table :

ITEM	SPECIFICATION
Display Area (mm)	152.4(W)×91.44(H)
Number of Pixels	800(H)×3(RGB)×480(V)
Pixel Pitch (mm)	0.1905(H)×0.1905(V)
Color Pixel Arrangement	RGB vertical stripe
Display Mode	Normally white
Number of colors	262,144
Viewing Direction	6 o'clock
Response Time (Tr+Tf)	20ms
Brightness(cd/m ²)	250nit(typ)
Viewing Angle(BL on,CR≥ 10)	140 degree(H) , 110degree(V)
Electrical Interface(data)	TTL
Power consumption	2.5W(Typ)
Outline Dimension(in mm)	165(W)×104(H)×6(D)
Weight(g)	TBD
BL unit	LED
Surface Treatment	Anti-Glare , Hardness:3H
Touch Panel Type	4 wire resistive

2. ABSOLUTE MAXIMUM RATINGS

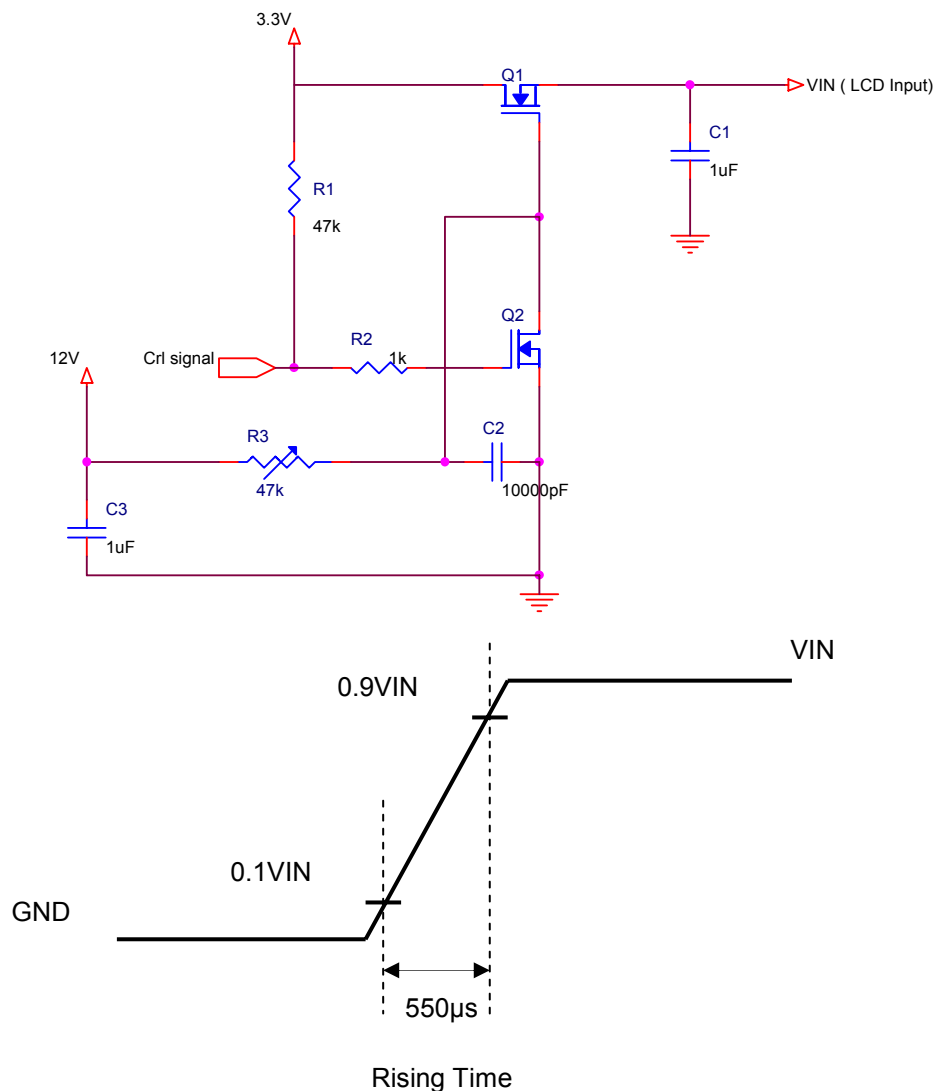
Item	Symbol	Min.	Max.	Unit	Note
Input Voltage	Vcc	-0.5	5.0	V	
Signal Input Voltage	DCLK,DE,R0,G0,B0~R5,G5,B5	-0.5	Vcc + 0.5	V	
Static Electricity	VESDc	-200	200	V	【Note1】
	VESDm	-15K	15K	V	
ICC Rush Current	IRUSH	-	1	A	【Note2】
Operation Temperature	T _{op}	-30	85	°C	
Storage Temperature	T _{stg}	-40	95	°C	

【Note1】

Test Condition: IEC 61000-4-2 ,
 VESDc : Contact discharge to input connector
 VESDm : Discontact discharge to module

【Note2】

Control signal:High(+3.3V)→Low(GND)
 Supply Voltage of rising time should be from R3 and C2 tune to 550 us.



3. ELECTRICAL CHARACTERISTICS

3.1 TFT LCD

Ta=25°C

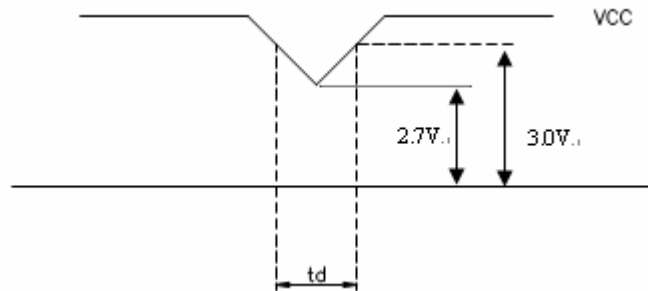
Item	Symbol	Min.	Typ	Max.	Unit	Note
Power Supply Voltage For LCD	VCC	3.0	3.3	3.6	V	【Note1】
Power Supply Voltage For LED	VLED	4.5	5	5.5	V	
Logic Input Voltage	VIH	VCC*0.7	--	VCC	V	
	VIL	0	--	VCC*0.3	V	
ADJ Input Voltage	Threshold Voltage(high)	VADJ_H	3.0	--	3.3	V
	Threshold Voltage(low)	VADJ_L	GND	--	0.3	V

Remarks :

【Note1】

VCC –dip codition:

- 1)When $2.7\text{V} \leq VCC < 3.0\text{V}$, $t_d \leq 10\text{ms}$.
- 2)When $VCC < 3.0\text{V}$, it works abnormal that must reset power.
VCC dip conditions should follow VCC turn on conditions



3.2 TFT-LCD Current Consumption

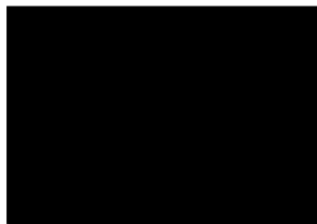
Item	Symbol	Min	Type	Max	Unit	Notes
LCD power current	ICC	--	150	200	mA	【Note1】
LED power current	ILED		400	450	mA	【Note2】

【Note1】

Typical: Under 64 gray pattern
 Maximum: Under black pattern



(a) 64 Gray Pattern



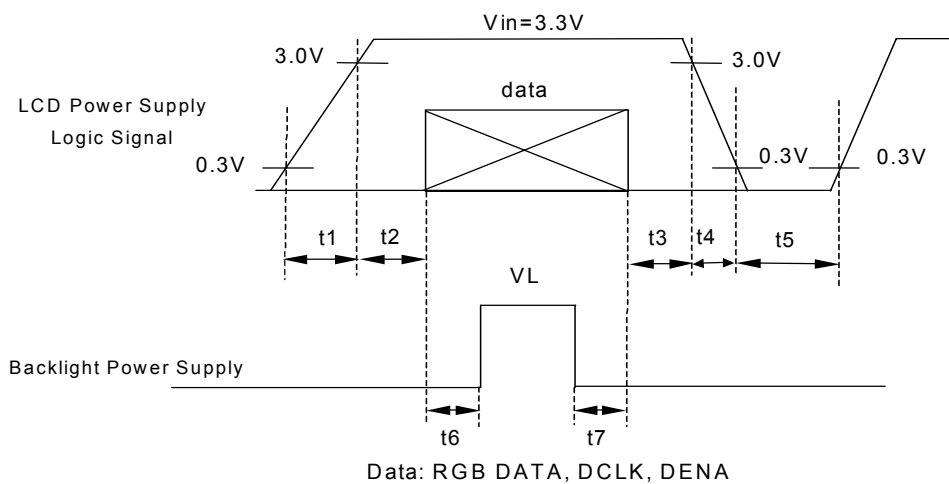
(b) Black Pattern

【Note2】

Typical: When VLED is 5V
 Maximum: When VLED is 4.5V

3.3 Power 、 Signal sequence

- $t1 \leq 10ms$ $1 \text{ sec} \leq t5$
- $0 < t2 \leq 50ms$ $200ms \leq t6$
- $0 < t3 \leq 50ms$ $200ms \leq t7$
- $0 < t4 \leq 10ms$



4. INTERFACE CONNECTION

4.1 CN1 : Connector type : 40pin / 0.5mm pitch / Bottom contact) : 089N40-000R00-G2

Pin NO.	SYMBOL	DESCRIPTION
1	AV _{SS}	Ground
2	AV _{SS}	Ground
3	ADJ	Brightness control for LED B/L
4	VLED	Power Supply for LED Driver circuit
5	VLED	Power Supply for LED Driver circuit
6	VLED	Power Supply for LED Driver circuit
7	VCC	Power Supply
8	VCC	Power Supply
9	DE	Data Enable Signal
10	AV _{SS}	Ground
11	AV _{SS}	Ground
12	AV _{SS}	Ground
13	B5	Blue Data 5 (MSB)
14	B4	Blue Data 4
15	B3	Blue Data 3
16	V _{SS}	Ground
17	B2	Blue Data 2
18	B1	Blue Data 1
19	B0	Blue Data 0 (LSB)
20	AV _{SS}	Ground
21	G5	Green Data 5 (MSB)
22	G4	Green Data 4
23	G3	Green Data 3
24	AV _{SS}	Ground
25	G2	Green Data 2
26	G1	Green Data 1
27	G0	Green Data 0 (LSB)
28	AV _{SS}	Ground
29	R5	Red Data 5 (MSB)
30	R4	Red Data 4
31	R3	Red Data 3
32	AV _{SS}	Ground
33	R2	Red Data 2
34	R1	Red Data 1
35	R0	Red Data 0
36	AV _{SS}	Ground
37	AV _{SS}	Ground
38	DCLK	Clock Signal
39	AV _{SS}	Ground
40	AV _{SS}	Ground

4.2 CN2 (Touch Panel)

Pin No.	Symbol	function
1	XL	X axis resistance
2	YD	Y axis resistance
3	XR	X axis resistance
4	YU	Y axis resistance

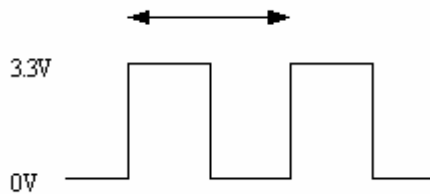
Remarks:

1). The ADJ can adjust LED BL brightness , where Duty and Luminance are in direct ratio.



2) The ADJ adjust signal level is 0~3.3V , operation frequency:20±5KHz

$$F = 20\text{KHz} , T = 0.05\text{ms}$$



3) AVSS Pin must connection to ground.

5. INPUT SIGNAL(DE ONLY MODE)

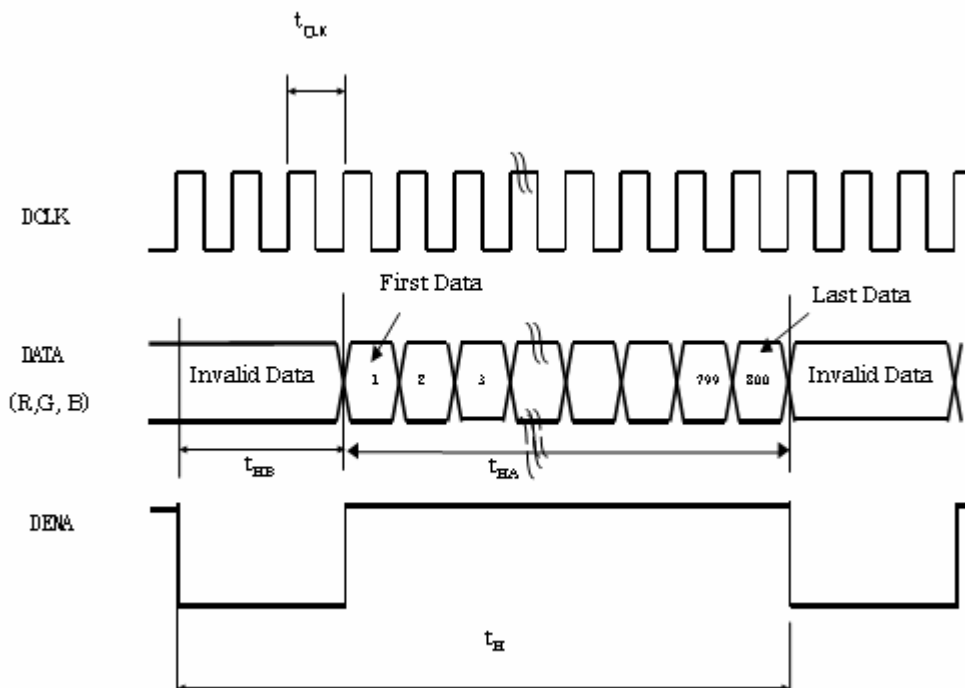
5.1 Timing Specification

	ITEM	SYMBOL	MIN.	TYP.	MAX.	UNIT	
DCLK	Dot Clock	$1/t_{CLK}$	25	27	32	MHz	
	Low Level Width	t_{WCL}	6	-	-	ns	
	High Level Width	t_{WCH}	6	-	-		
DE	Setup Time	t_{DES}	5	-	-	ns	
	Hold time	t_{DEH}	10	-	-		
	Horizontal Period	t_H	850	900	950	t_{CLK}	
	Horizontal Valid	t_{HA}	800				
	Horizontal Blank	t_{HB}	50	100	150		
		Vertical Period	t_V	490	500	520	t_{HP}
		Vertical Valid	t_{VA}	480			
		Vertical Blank	t_{VB}	10	20	40	
		Vertical Frequency	f_V	55	60	65	Hz
DATA		Setup Time	t_{DS}	5	-	-	ns
	Hold Time	t_{DH}	10	-	-		

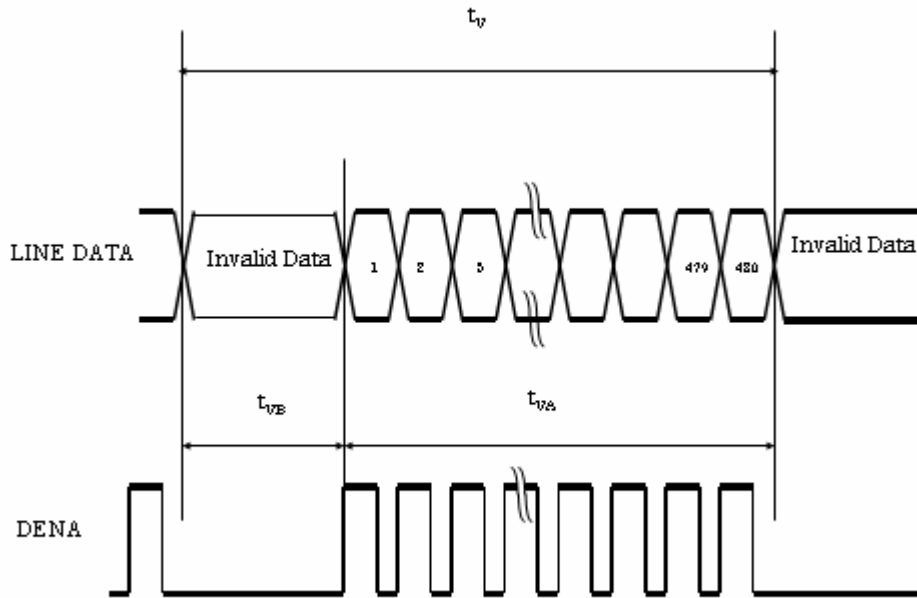
【Note1】 This module is operated by DE only mode.

5.2 Timing sequence(Timing chart)

5.2.1 Horizontal Timing Sequence



5.2.2 Vertical Timing Sequence



5.4 Color Data Assignment

COLOR	INPUT DATA	R DATA						G DATA						B DATA					
		R5	R4	R3	R2	R1	R0	G5	G4	G3	G2	G1	G0	B5	B4	B3	B2	B1	B0
		MSB					LSB	MSB					LSB	MSB					LSB
BASIC COLOR	BLACK	0	0	0	0	0	0	0	0	0	0	0	0	0	0	0	0	0	0
	RED(63)	1	1	1	1	1	1	0	0	0	0	0	0	0	0	0	0	0	0
	GREEN(63)	0	0	0	0	0	0	1	1	1	1	1	1	0	0	0	0	0	0
	BLUE(63)	0	0	0	0	0	0	0	0	0	0	0	0	1	1	1	1	1	1
	CYAN	0	0	0	0	0	0	1	1	1	1	1	1	1	1	1	1	1	1
	MAGENTA	0	0	0	0	0	1	0	0	0	0	0	0	0	0	0	0	0	0
	RED(2V)	0	0	0	0	1	0	0	0	0	0	0	0	0	0	0	0	0	0
RED	WHITE	1	1	1	1	1	1	1	1	1	1	1	1	1	1	1	1	1	1
RED	RED(0)	0	0	0	0	0	0	0	0	0	0	0	0	0	0	0	0	0	0
	RED(62)	1	1	1	1	1	0	0	0	0	0	0	0	0	0	0	0	0	0
	RED(63)	1	1	1	1	1	1	0	0	0	0	0	0	0	0	0	0	0	0
GREEN	GREEN(0)	0	0	0	0	0	0	0	0	0	0	0	0	0	0	0	0	0	0
	GREEN(1)	0	0	0	0	0	0	0	0	0	0	0	1	0	0	0	0	0	0
	GREEN(2)	0	0	0	0	0	0	0	0	0	0	1	0	0	0	0	0	0	0
	GREEN(62)	0	0	0	0	0	0	1	1	1	1	1	0	0	0	0	0	0	0
	GREEN(63)	0	0	0	0	0	0	1	1	1	1	1	1	0	0	0	0	0	0
BLUE	BLUE(0)	0	0	0	0	0	0	0	0	0	0	0	0	0	0	0	0	0	0
	BLUE(1)	0	0	0	0	0	0	0	0	0	0	0	0	0	0	0	0	0	1
	BLUE(2)	0	0	0	0	0	0	0	0	0	0	0	0	0	0	0	0	1	0
	BLUE(62)	0	0	0	0	0	0	0	0	0	0	0	0	1	1	1	1	1	0
	BLUE(63)	0	0	0	0	0	0	0	0	0	0	0	0	1	1	1	1	1	1

Remarks:

(1) Definition of Gray Scale

color(n) : n is series of Gray Scale

The more n value is, the bright Gray Scale.

(2) Data: 1-High, 0-Low

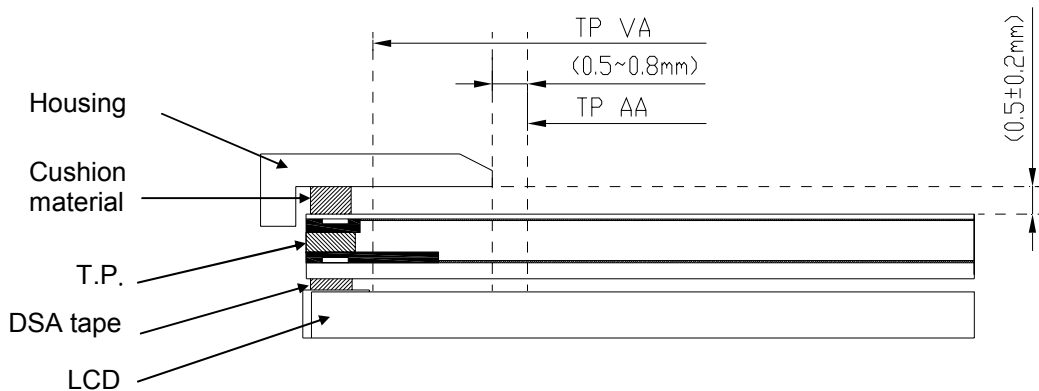
6. CHARACTERISTIC OF TOUCH PANEL

6.1 Basis characteristic

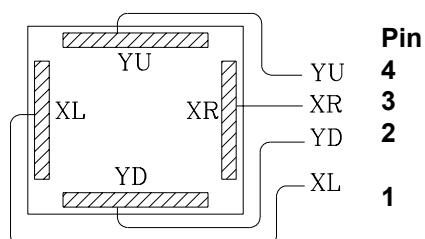
Item	Standard	Note
Operating Voltage	3V(Min)/5V(Typ)/7V(Max)	DC
Surface Treatment	Anti-Glare · Hardness : 3H	
Activation Force	20gf ± 10gf	Less than 80gf(Typical 20gf) individual with stylus pen (R 0.8mm) or finger (R 8.0mm)
Linearity Force	130 gf	Input with stylus pen (R0.8mm)
Interface Type	4 Wire Resistive	
Resistance Between Terminals	X(Glass side) : 360~1140Ω Y(Film side) : 120~640Ω	At the connector
Linearity	X(Glass side) : ≤ 1.5% Y(Film side) : ≤ 1.5%	Testing interval is 2mm with load 100g
Insulation Resistance	Min. 20MΩ	At DC 25V

6.2 Design guideline for Touch-Panel

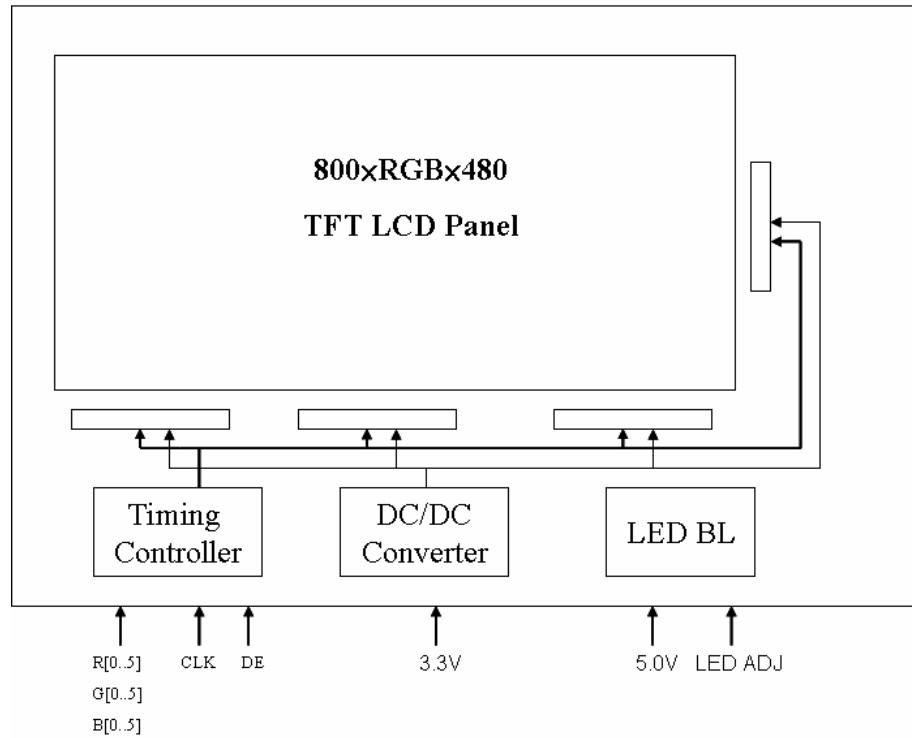
- (a) The Housing Cushion on touch-panel must be set at outside of T.P's view-area .
- (b) The Cushion material must be elastic material.
- (c) The housing must avoid to touch the T.P
- (d) To combine, the housing should not be stuck on T.P.
- (e) Example of housing design :



6.3 Circuit Diagram



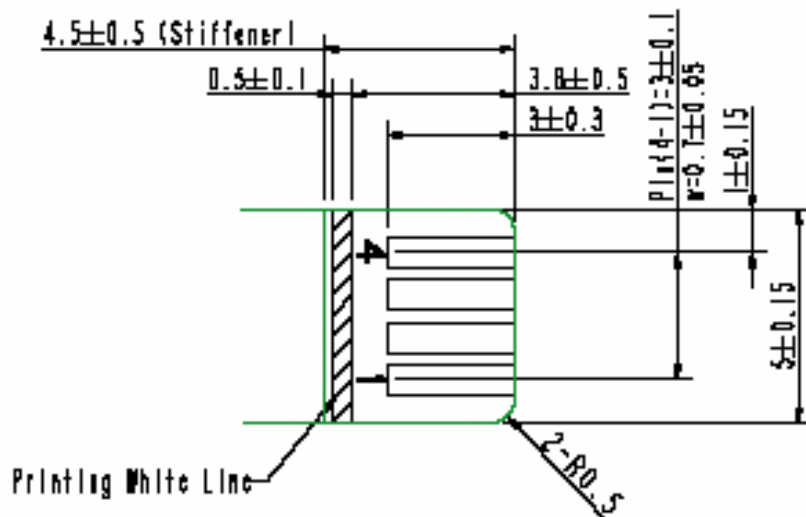
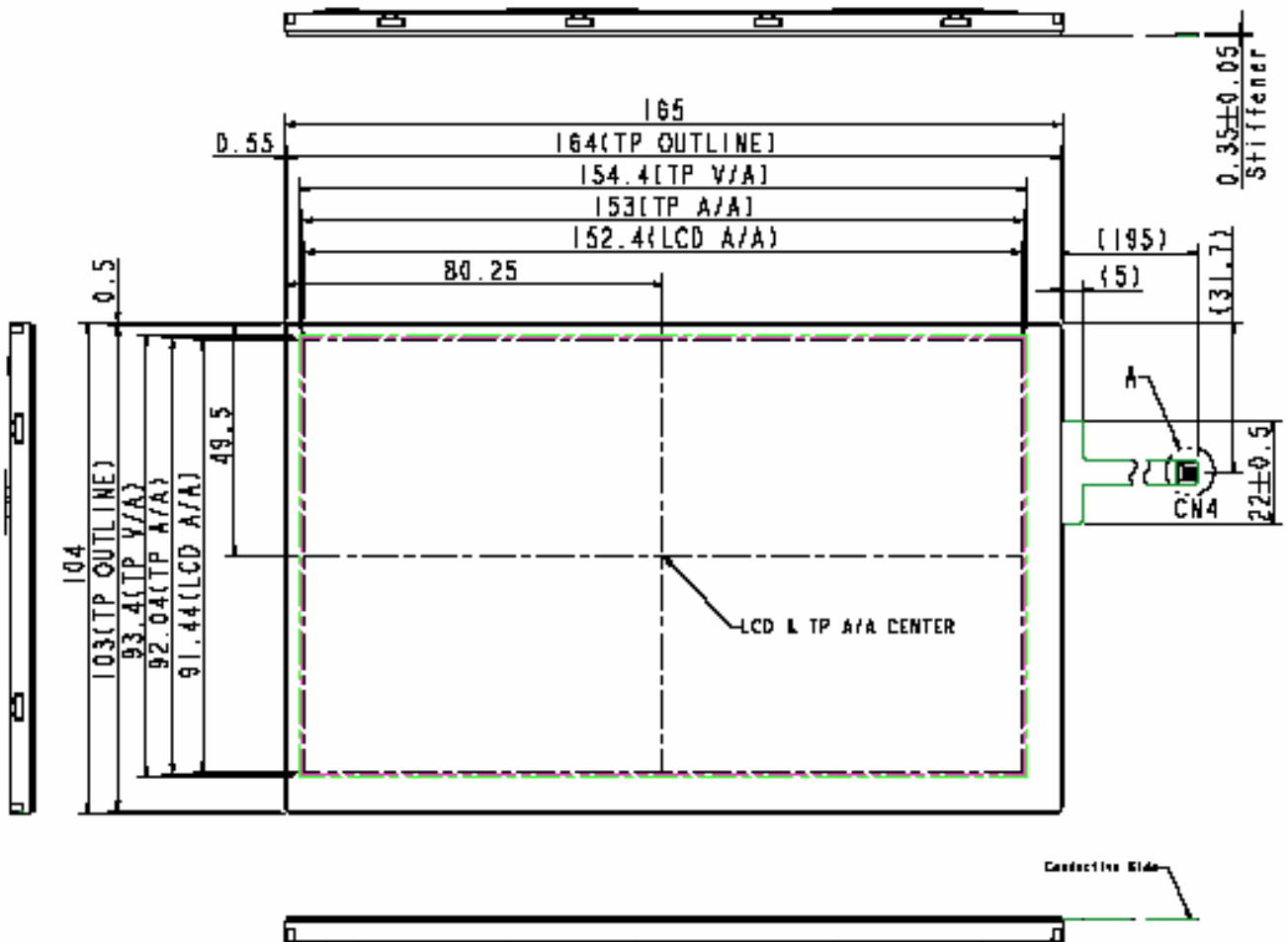
7. BLOCK DIAGRAM



8. MECHANICAL DIMENSION

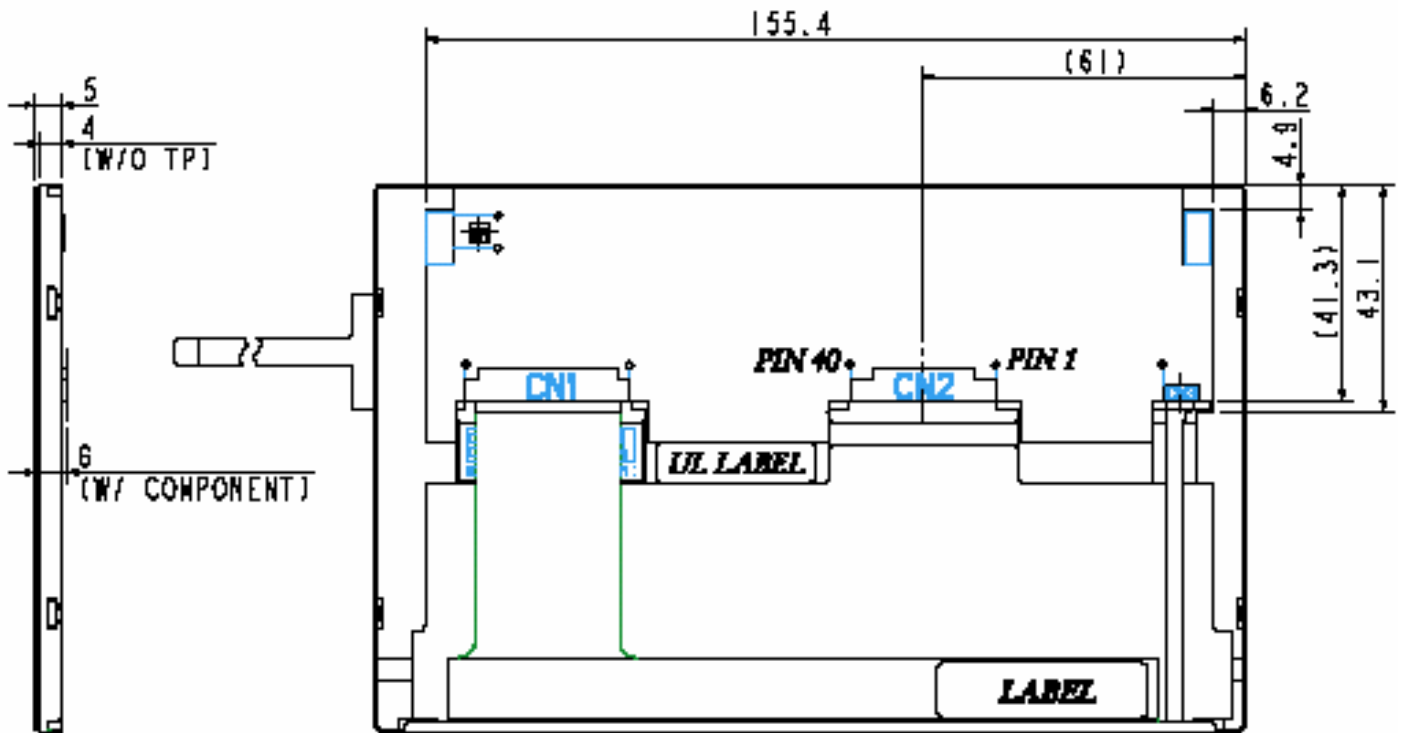
8.1 Front Side

[Unit : mm]



8.2 Rear Side

[Unit : mm]



Remark : Un-indication tolerance is $\pm 0.3\text{mm}$

9. OPTICAL CHARACTERISTICS

DATA MODUL

DISPLAY AND SYSTEM SOLUTIONS

ITEM	SYMBOL	CONDITION	MIN.	TYP.	MAX.	UNIT	Remarks	
Constrast Ratio	CR	Point-5	300	400	--	--	*1)*2)*3)	
Luminance*)	Lw	Point-5	200	250	--	cd/m ²	*2)	
Luminance Uniformity	ΔL		70	80	--	%	*2)	
Response Time (White - Black)	Tr + Tf		--	--	20	ms	*2)*4)	
Viewing Angle	Horizontal	ϕ	CR ≥ 10 Point-5	120	140	--	°	*2)*3)
	Vertical	θ		90	110	--	°	2)*3)
Color Coordinate	White	Wx Wy	Point-5	0.273 0.289	0.313 0.329	0.353 0.369	--	2)*3)
	Red	Rx Ry		0.535 0.292	0.575 0.332	0.615 0.372		
	Green	Gx Gy		0.290 0.525	0.330 0.565	0.370 0.605		
	Blue	Bx By		0.110 0.080	0.150 0.120	0.190 0.160		

Remarks :

*1) Definition of contrast ratio : (in the dark room.BM-5A (TOPCON))

$$\text{Contrast Ratio (CR)} = (\text{White Luminance of ON} \div \text{Black Luminance of OFF})$$

*2) Definition of luminance : (in the dark room.BM-5A (TOPCON))

Measure white luminance on the point 5 as figure9-1

Definition of Luminance Uniformity:

Measure white luminance on the point1~9 as figure9-1

$$\Delta L = [L(\text{MIN})/L(\text{MAX})] \times 100$$

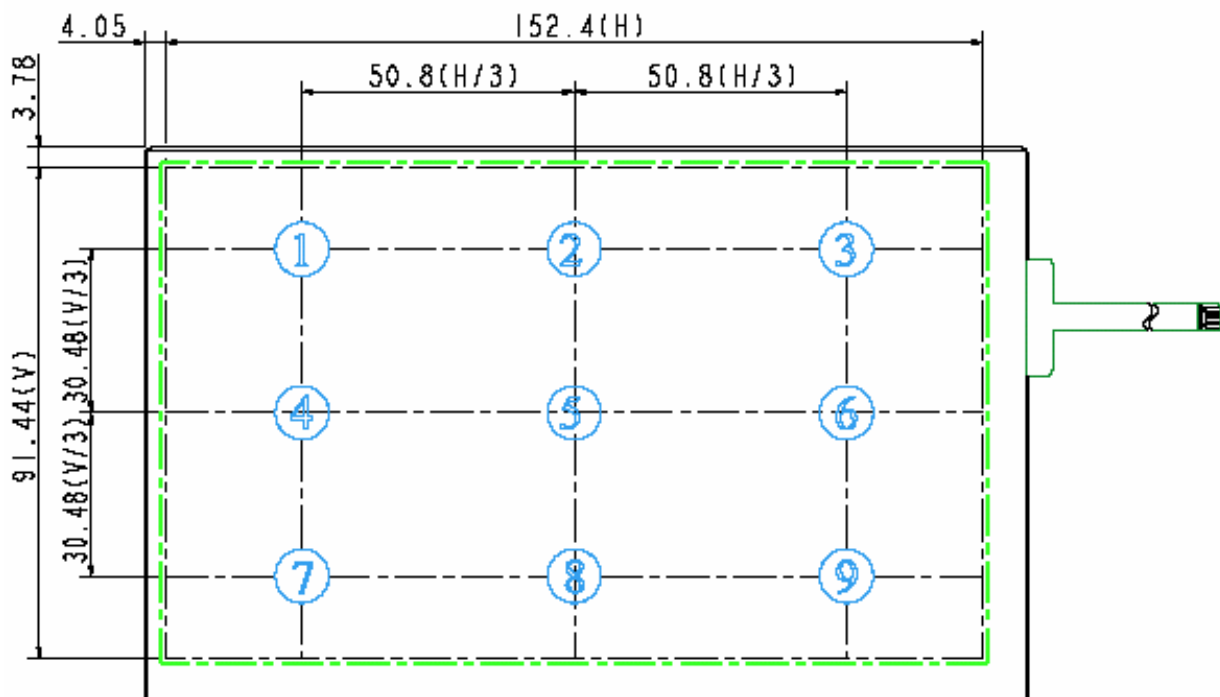


Fig9-1 Measuring point

*3) Definition of Viewing Angle(θ, ϕ), refer to Fig9-2 as below : (in the dark room.EZ-CONTRAST (ELDIM))

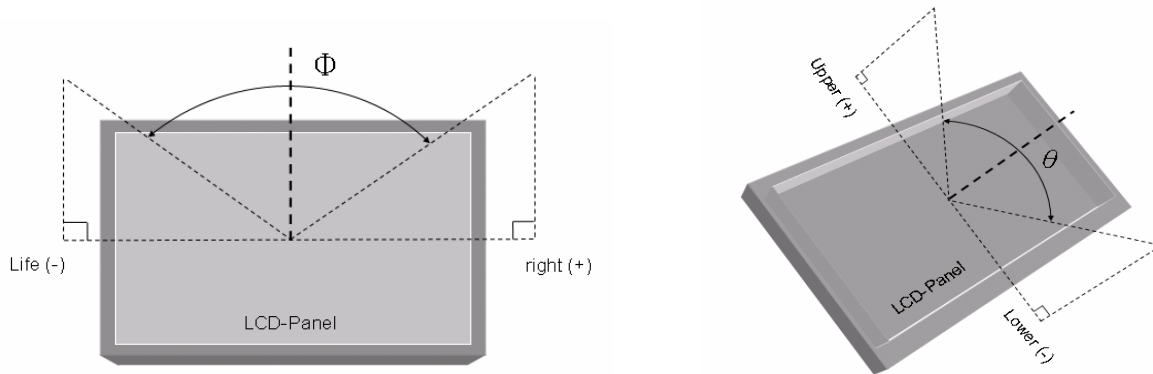


Fig9-2 Definition of Viewing Angle

*4) Definition of Response Time.(White-Black)

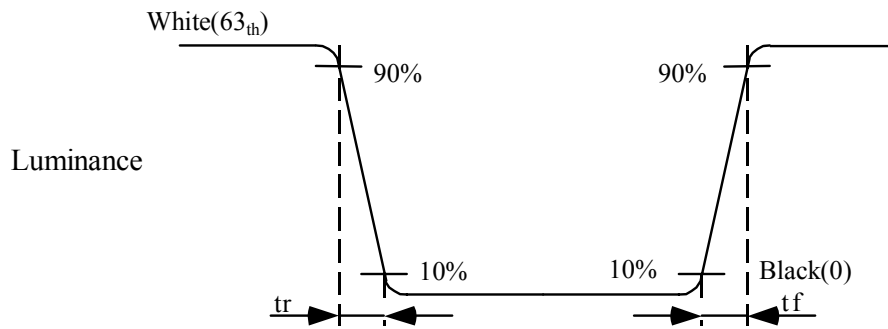


Fig9-3 Definition of Response Time(White-Black)

10. RELIABILITY TEST

10.1. Temperature and humidity

TEST ITEMS	CONDITIONS	REMARK
High Temperature Operation	85°C , 240Hrs	
High Temperature Storage	95°C , 240Hrs	
High Temperature High Humidity Operation	60°C , 90%RH , 240Hrs	No condensation
Low Temperature Operation	-30°C , 240Hrs	
Low Temperature Storage	-40°C , 240Hrs	
Thermal Shock	-30°C (0.5Hr) ~ 85°C(0.5Hr) 200 cycles	

10.2. Shock and Vibration

TEST ITEMS	CONDITIONS
Shock (Non-operation)	<ul style="list-style-type: none"> ● Shock level:980m/s²(equal to 100G) ● Waveform:half sinusoidal wave,6ms. ● Number of shocks:one shock input in each direction of three mutually perpendicular axes for a total of three shock inputs.
Vibration (Non-operation)	<ul style="list-style-type: none"> ● Frequency range:8~33.3Hz ● Stroke:1.3mm ● Vibration:sinusoidal wave,perpendicularaxis(both x, z axis:2Hrs, y axis 4Hrs). ● Sweep:2.9G,33.3Hz-400Hz ● Cycle:15min

10.3 Judgment standard

The Judgment of the above test should be made as follow:

Pass:Normal display image with no obvious non-uniformity and no line defect.Partial transformation of the module parts should be ignored.

Fail:No display image,obvious non-uniformity,or line defect.



Data Modul Headquarters Munich
Landsberger-Str. 322
D-80687 Munich - Germany
Tel.: +49-89-56017-0



Sales Office Duesseldorf
Fritz-Vomfelde-Str. 8
D-40547 Duesseldorf - Germany
Tel.: +49-211-52709-0



Sales Office Stuttgart
Friedrich-List-Str. 42
D-70771 Leinfelden-Echterdingen
Germany
Tel.: +49-711-782385-0



Data Modul France, S.A.R.L.
Bat B - Hall 204
1-3 Rue des Campanules
77185 Lognes - France
Tel.: +33-1-60378100



Data Modul Italia, S.r.l.
Regus Center Senigallia
Via Senigallia 18/2
20161 Milano - Italy
Tel.: +39-02-64672-509



Data Modul Iberia, S.L.
c/ Adolfo Pérez Esquivel 3
Edificio Las Americas III Oficiana 40
28230 Parque Empresarial
Madrid Las Rozas - Spain
Tel.: +34-916 366 458



Data Modul Ltd. / UK
3 Brindley Place
Birmingham B 12JB
United Kingdom
Tel.: +44-121-698-8641

Data Modul Inc. / USA
1767-46 Veterans Memorial Highway
Islandia NY 11749
USA
Tel.: +1-877-951-0800