



Document Title	HSD101PFW3-D00-C Formal Specification	Page No.	1/33
Document No.	DC140-000753	Revision	1.0

TO :

Date : Apr.,29 , 2010

# HannStar Product Specification (Formal)

Model: **HSD101PFW3**  
**-D00-C\***

- Note:
- 1.The information contained herein is preliminary and may be changed without prior notices
  - 2.Please contact HannStar Display Corp. before designing your product based on this module specification.
  - 3.The information contained herein is presented merely to indicate the characteristics and performance of our products. No responsibility is assumed by HannStar for any intellectual property claims or other problems that may result from application based on the module described herein.
  - 4.The mark “\*\*” of Model means sub-model code.



Document Title	HSD101PFW3-D00-C Formal Specification	Page No.	2/33
Document No.	DC140-000753	Revision	1.0

### Record of Revisions

Rev.	Date	Sub-Model	Description of change
1.0	Apr., 29, 2010	D00-C00	Product information was first released



Document Title	HSD101PFW3-D00-C Formal Specification	Page No.	3/33
Document No.	DC140-000753	Revision	1.0

## Contents

1.0	General description .....	p.4
2.0	Absolute maximum ratings.....	p.5
3.0	Optical characteristics.....	p.6
4.0	Touch panel screen specification .....	p.10
5.0	Block diagram .....	p.14
6.0	Interface pin connection .....	p.16
7.0	Electrical characteristics .....	p.19
8.0	Reliability test items .....	p.26
9.0	Outline dimension .....	p.27
10.0	Lot mark .....	p.29
11.0	Package specification .....	p.30
	For Specific Customer Revision.....	p.33

Document Title	HSD101PFW3-D00-C Formal Specification	Page No.	4/33
Document No.	DC140-000753	Revision	1.0

## 1.0 GENERAL DESCRIPTION

### 1.1 Introduction

HannStar Display model HSD101PFW3-D00-C00 is a color active matrix thin film transistor (TFT) liquid crystal display (LCD) that uses amorphous silicon TFT as a switching device. This model is composed of a TFT LCD panel, a driving circuit, back light system, projected capacitive touch sensor, and cover lens. This TFT LCD with projected capacitive touch sensor has a 10.1 (16:9) inch diagonally measured active display area with WSVGA (1024 horizontal by 600 vertical pixel) resolution.

### 1.2 Features

- 10.1 (16:9 diagonal) inch configuration
- Multi-Finger touch function (2D)
- 262K color by 6 bit R.G.B signal input

### 1.3 Applications

- Mobile NB
- Digital Photo frame
- Display terminal for AV application

### 1.4 TFT LCD General information

Item	Specification	Unit
Outline Dimension	248.9x 164.9 (typ) w/ Cover Lens	mm
Display area	222.72(H) x 125.28(V)	mm
Number of Pixel	1024 RGB (H) x 600(V)	pixels
Pixel pitch	0.2175(H) x 0.2088(V)	mm
Pixel arrangement	RGB Vertical stripe	
Display mode	Normally white	
NTSC	50	%
Weight	300 (Max.)	g
Back-light	White LED	
Power Consumption	0.65 (Max)/Logic	W

Document Title	HSD101PFW3-D00-C Formal Specification	Page No.	5/33
Document No.	DC140-000753	Revision	1.0

### 1.5 Mechanical Information

Item		Min.	Typ.	Max.	Unit	Remark
Module Size	Horizontal (H)	248.4	248.9	249.4	mm	W/ Cover Lens
	Vertical (V)	164.4	164.9	165.4	mm	
	Depth (D)	—	5.2	5.5	mm	
Weight	—	285	300	g		

## 2.0 ABSOLUTE MAXIMUM RATINGS

### 2.1 Electrical Absolute Rating

#### 2.1.1 TFT LCD Module

Item	Symbol	Min.	Max.	Unit	Note
LED Power Supply voltage	$V_{LED}$	-0.3	6.0	V	GND=0
Logic Supply voltage	$V_{DD}$	-0.3	6.0	V	

### 2.2 Environment Absolute Rating

Item	Symbol	Min.	Max.	Unit	Note
Operating Temperature	$T_{opa}$	0	50	°C	
Storage Temperature	$T_{stg}$	-20	60	°C	

Document Title	HSD101PFW3-D00-C Formal Specification	Page No.	6/33
Document No.	DC140-000753	Revision	1.0

### 3.0 OPTICAL CHARACTERISTICS

#### 3.1 Optical specification

Item		Symbol	Condition	Min.	Typ.	Max.	Unit	Note	
Contrast		CR	$\theta=0$ Normal viewing angle	560	700	—		(1)(2)(4)	
Response time		Tr		—	3	6	msec	(1)(3)	
		Tf		—	9	18			
White luminance (5 point)		$Y_L$			140	180	—	cd/m <sup>2</sup>	(1)(4)(5)
Color chromaticity (CIE1931)	Red	$R_x$			(0.555)	(0.605)	(0.655)		
		$R_y$			(0.302)	(0.352)	(0.402)		
	Green	$G_x$			(0.259)	(0.309)	(0.359)		
		$G_y$			(0.487)	(0.537)	(0.587)		
	Blue	$B_x$			(0.099)	(0.149)	(0.199)		
		$B_y$			(0.061)	(0.111)	(0.161)		
	White	$W_x$		(0.263)	(0.313)	(0.363)			
		$W_y$		(0.279)	(0.329)	(0.379)			
Viewing angle	Hor.	$\theta_L$	CR>10	70	80	—		(1)(4)	
		$\theta_R$		70	80	—			
	Ver.	$\theta_U$		60	70	—			
		$\theta_D$		70	80	—			
Brightness uniformity		$B_{UNI}$	$\theta=0$ (5point)	—	—	(1.28)		(5)	
Brightness Uniformity		$B_{UNI}$	$\theta=0$ (13 points)	—	—	(1.53)		(6)	

#### 3.2 Measuring Condition

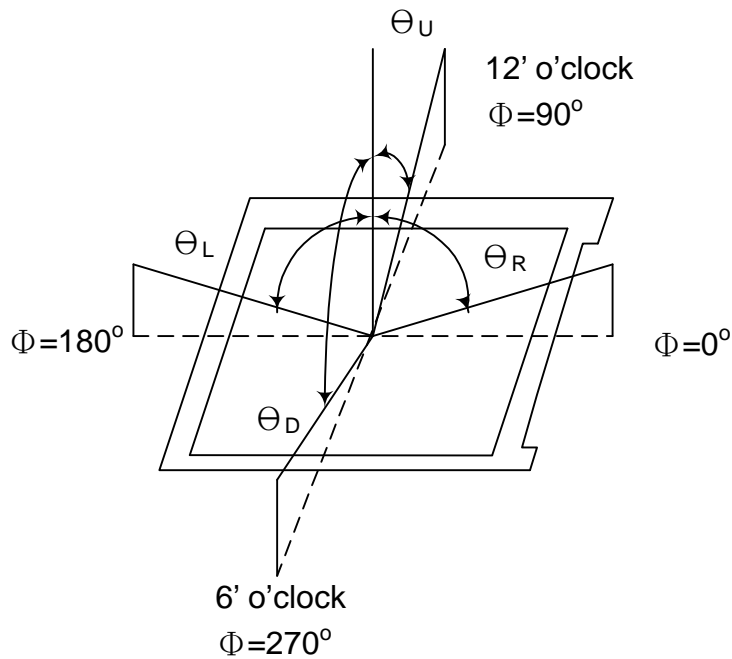
- Measuring surrounding : dark room
- Ambient temperature : 25±2°C
- 15min. warm-up time.

Document Title	HSD101PFW3-D00-C Formal Specification	Page No.	7/33
Document No.	DC140-000753	Revision	1.0

### 3.3 Measuring Equipment

- FPM520 of Westar Display technologies, INC., which utilized SR-3 for Chromaticity and BM-5A for other optical characteristics.
- Measuring spot size : 20 ~ 21 mm

**Note (1)** Definition of Viewing Angle:

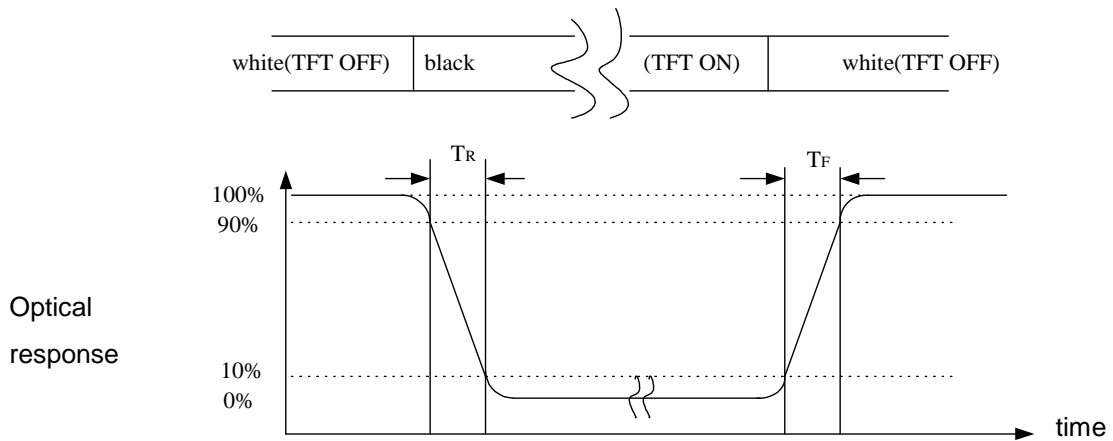


**Note (2)** Definition of Contrast Ratio (CR) :  
measured at the center point of panel

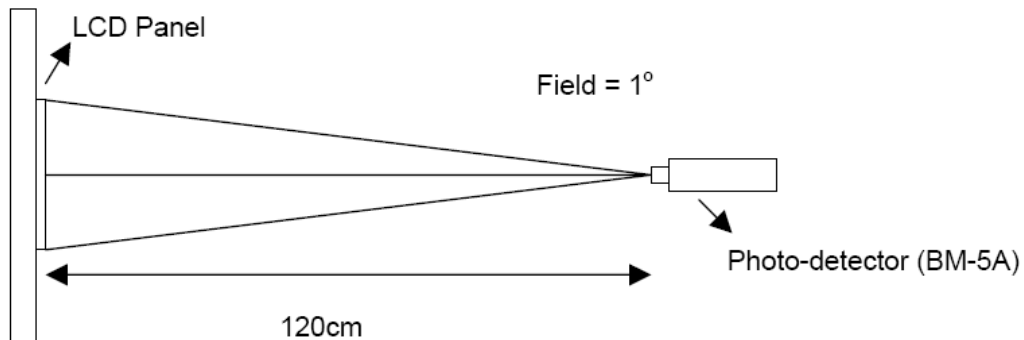
$$CR = \frac{\text{Luminance with all pixels white}}{\text{Luminance with all pixels black}}$$

Document Title	HSD101PFW3-D00-C Formal Specification	Page No.	8/33
Document No.	DC140-000753	Revision	1.0

**Note (3)** Definition of Response Time : Sum of  $T_R$  and  $T_F$



**Note (4)** Definition of optical measurement setup

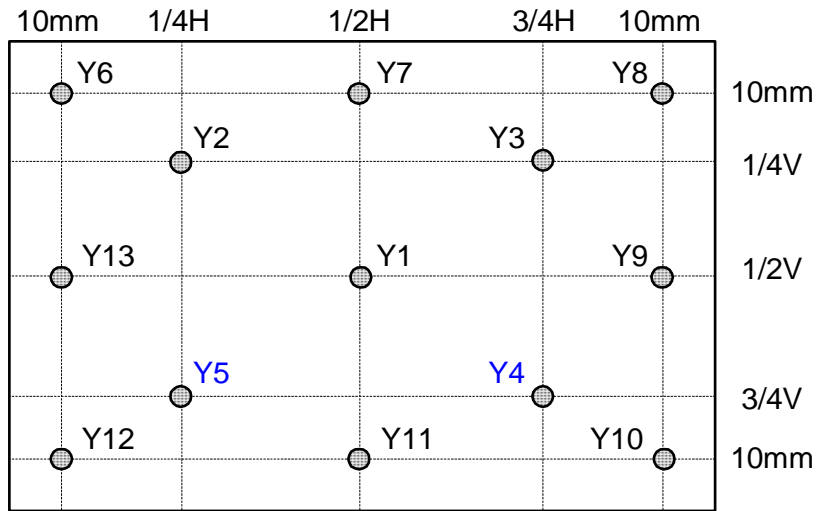




Document Title	HSD101PFW3-D00-C Formal Specification	Page No.	9/33
Document No.	DC140-000753	Revision	1.0

**Note (5)** Definition of Average Luminance Uniformity of White (5 Point)

$$\text{Average Luminance Uniformity} = \frac{Y_1+Y_2+Y_3+Y_4+Y_5}{5}$$



**Note (6)** Definition of brightness uniformity

$$\text{Luminance uniformity} = \frac{\text{(Max Luminance of 5 points)}}{\text{(Min Luminance of 5 points)}}$$

$$\text{Luminance uniformity} = \frac{\text{(Max Luminance of 13 points)}}{\text{(Min Luminance of 13 points)}}$$

Document Title	HSD101PFW3-D00-C Formal Specification	Page No.	10/33
Document No.	DC140-000753	Revision	1.0

## 4.0 TOUCH SCREEN PANEL SPECIFICATION

### 4.1 Electrical Absolute Rating

#### 4.1.1 Touch Panel Module

Item	Symbol	Min.	Max.	Unit	Note
Supply Voltage	V <sub>CC</sub>	-0.3	6.0	V	Supply Voltage on V <sub>CC</sub> Relative to V <sub>SS</sub> /GND

#### 4.1.2 Tango S32

Item	Symbol	Min.	Max.	Unit	Note
Supply Voltage	V <sub>CC</sub>	-0.3	7.0	V	Supply Voltage on V <sub>CC</sub> Relative to V <sub>SS</sub>
DC Input Voltage	V <sub>term</sub>	GND-0.3	V <sub>CC</sub> +0.3	V	

#### 4.1.3 MCU

Item	Symbol	Min.	Typ.	Max.	Unit	Note
Supply Voltage	V <sub>CC</sub>	-0.5		6.0	V	Supply Voltage on V <sub>CC</sub> Relative to V <sub>SS</sub>
Maximum Operating Voltage	V <sub>max</sub>			6	V	
DC Current per I/O Pin	I <sub>d</sub>		40		mA	

## 4.2 DC Electrical Characteristics

### 4.2.1 Touch Panel

Item	Symbol	Min.	Typ.	Max.	Unit	Note
Supply Voltage	V <sub>CC</sub>	2.7	5.0	5.5	V	
Supply Current at Normal Operation Mode	I <sub>CC</sub>		15	25	mA	

Test Condition: TA = -40 to 85 °C, V<sub>CC</sub> = 2.7V to 5.5V (unless otherwise noted)

Document Title	HSD101PFW3-D00-C Formal Specification	Page No.	11/33
Document No.	DC140-000753	Revision	1.0

#### 4.2.2 Tango S32

Item	Symbol	Min.	Typ.	Max.	Unit	Note
Supply Voltage	V <sub>CC</sub>	2.7		5.5	V	
Static current active mode (CSb "low" -- CK not switching)	I <sub>off</sub>	-	0.09	-	mA	
Dynamic current active mode (cSb "low" -- CK = 100 KHz -- No load on T0 to T32)	I <sub>on</sub>		0.13		mA	
Input leakage current (absolute value) (Gross tested at 1μA)	I <sub>il</sub>		1		nA	
DO input leakage during "High impedance" state (Gross tested at 1μA)	I <sub>dol</sub>		10		nA	
Voltage input high	V <sub>ih</sub>	0.8*V <sub>CC</sub>			V	
Voltage input low	V <sub>il</sub>			0.2*V <sub>CC</sub>	V	
Voltage output high (at I <sub>OH</sub> = 1 mA)	V <sub>oh</sub>	V <sub>CC</sub> -0.4			V	
Voltage output low (at I <sub>OL</sub> = 1 mA)	V <sub>ol</sub>			0.4	V	

#### 4.2.3 MCU

Item	Symbol	Min.	Typ.	Max.	Unit	Note
Voltage input high	V <sub>ih</sub>	0.6*V <sub>CC</sub>		V <sub>CC</sub> +0.5	V	
Voltage input low	V <sub>il</sub>	-0.5		0.2*V <sub>CC</sub>	V	
Voltage output high (I <sub>OH</sub> = -20mA, V <sub>CC</sub> = 5V)	V <sub>oh</sub>	4.2			V	
Voltage output low (I <sub>OL</sub> = 10mA, V <sub>CC</sub> = 5V)	V <sub>ol</sub>			0.7	V	
Input Leakage Current I/O Pin, V <sub>CC</sub> = 5.5V, pin high (absolute value)	I <sub>ih</sub>			1	uA	
Input Leakage Current I/O Pin, V <sub>CC</sub> = 5.5V, pin low (absolute value)	I <sub>il</sub>			1	uA	
Active 16MHz, V <sub>CC</sub> = 5V	I <sub>CC</sub>		13.5	25	mA	
Idle 16MHz, V <sub>CC</sub> = 5V			4	4.5	mA	

### 4.3 Interface Pin Connection

Touch Panel Module : CN1 (Input signal):

Pin	Signal	Description
1	VCC	Power Supply, 5V(typical)
2	D-	USB Data -
3	D+	USB Data +
4	GND	Ground
5	Boot	Firmware Programming

Document Title	HSD101PFW3-D00-C Formal Specification	Page No.	12/33
Document No.	DC140-000753	Revision	1.0

#### 4.4 HID Report Descriptor

We follow Microsoft HID spec to provide 2 fingers multi-touch. The report descriptor can be listed in the following.

```

0x05, 0x0d,           // USAGE_PAGE (Digitizers)
0x09, 0x04,           // USAGE (Touch Screen)
0xa1, 0x01,           // COLLECTION (Application)
0x85, REPORTID_MTOUCH, // REPORT_ID (Touch)
0x09, 0x22,           // USAGE (Finger)
0xa1, 0x02,           // COLLECTION (Logical)
0x09, 0x42,           // USAGE (Tip Switch)
0x15, 0x00,           // LOGICAL_MINIMUM (0)
0x25, 0x01,           // LOGICAL_MAXIMUM (1)
0x75, 0x01,           // REPORT_SIZE (1)
0x95, 0x01,           // REPORT_COUNT (1)
0x81, 0x02,           // INPUT (Data,Var,Abs)
0x09, 0x32,           // USAGE (In Range)
0x81, 0x02,           // INPUT (Data,Var,Abs)
0x95, 0x06,           // REPORT_COUNT (6)
0x81, 0x03,           // INPUT (Cnst,Ary,Abs)
0x75, 0x08,           // REPORT_SIZE (8)
0x09, 0x51,           // USAGE (Temp Identifier)
0x95, 0x01,           // REPORT_COUNT (1)
0x81, 0x02,           // INPUT (Data,Var,Abs)
0x05, 0x01,           // USAGE_PAGE (Generic Desk..)
0x26, 0xff, 0x0f,     // LOGICAL_MAXIMUM (4095)
0x75, 0x10,           // REPORT_SIZE (16)
0x55, 0x0e,           // UNIT_EXPONENT (-2)
0x65, 0x33,           // UNIT (Inch,EngLinear)
0x09, 0x30,           // USAGE (X)
0x35, 0x00,           // PHYSICAL_MINIMUM (0)
0x46, 0xb5, 0x04,     // PHYSICAL_MAXIMUM (1205)
0x81, 0x02,           // INPUT (Data,Var,Abs)
0x46, 0x8a, 0x03,     // PHYSICAL_MAXIMUM (906)
0x09, 0x31,           // USAGE (Y)
0x81, 0x02,           // INPUT (Data,Var,Abs)
0xc0,                 // END_COLLECTION
0xa1, 0x02,           // COLLECTION (Logical)
0x05, 0x0d,           // USAGE_PAGE (Digitizers)
0x09, 0x42,           // USAGE (Tip Switch)
0x15, 0x00,           // LOGICAL_MINIMUM (0)

```



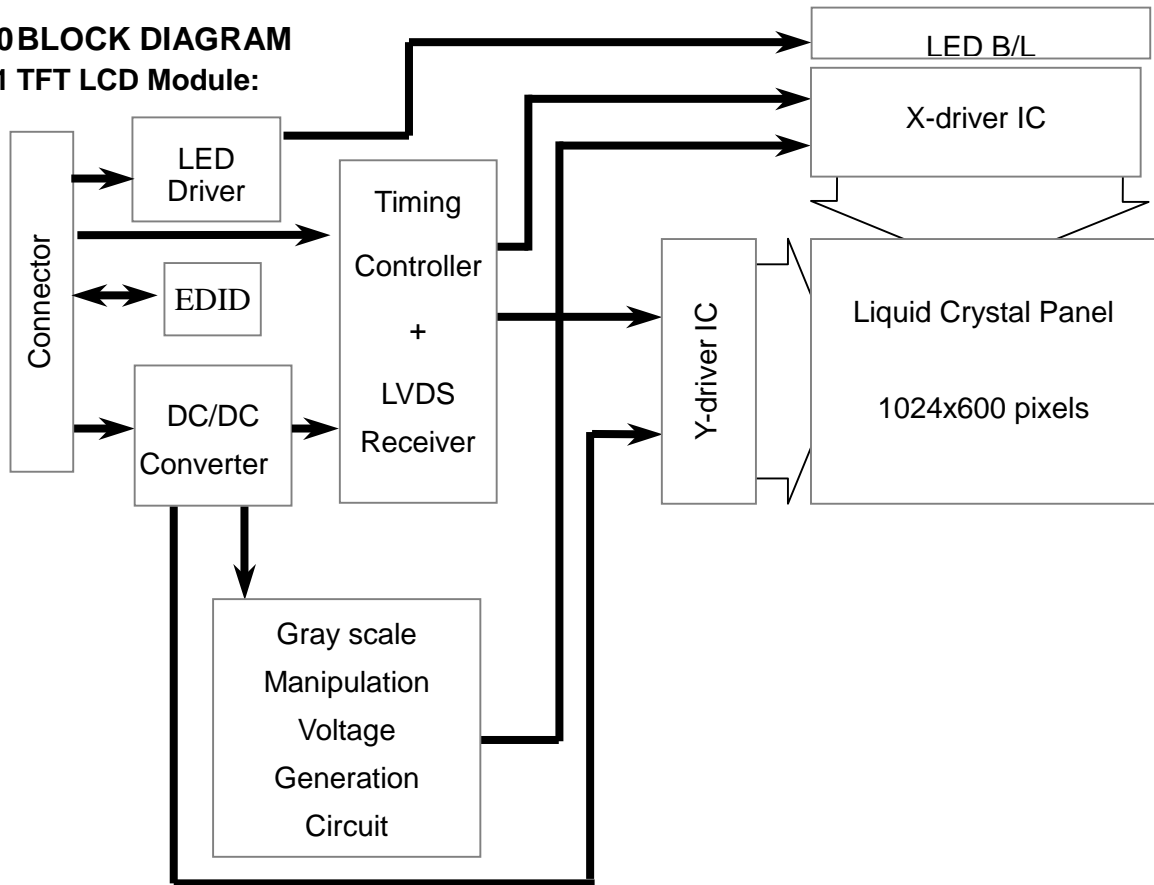
Document Title	HSD101PFW3-D00-C Formal Specification	Page No.	13/33
Document No.	DC140-000753	Revision	1.0

0x25, 0x01,	// LOGICAL_MAXIMUM (1)
0x75, 0x01,	// REPORT_SIZE (1)
0x95, 0x01,	// REPORT_COUNT (1)
0x81, 0x02,	// INPUT (Data,Var,Abs)
0x09, 0x32,	// USAGE (In Range)
0x81, 0x02,	// INPUT (Data,Var,Abs)
0x95, 0x06,	// REPORT_COUNT (6)
0x81, 0x03,	// INPUT (Cnst,Ary,Abs)
0x75, 0x08,	// REPORT_SIZE (8)
0x09, 0x51,	// USAGE (Temp Identifier)
0x95, 0x01,	// REPORT_COUNT (1)
0x81, 0x02,	// INPUT (Data,Var,Abs)
0x05, 0x01,	// USAGE_PAGE (Generic Desk..)
0x26, 0xff, 0x0f,	// LOGICAL_MAXIMUM (4095)
0x75, 0x10,	// REPORT_SIZE (16)
0x55, 0x0e,	// UNIT_EXPONENT (-2)
0x65, 0x33,	// UNIT (Inch,EngLinear)
0x09, 0x30,	// USAGE (X)
0x35, 0x00,	// PHYSICAL_MINIMUM (0)
0x46, 0xb5, 0x04,	// PHYSICAL_MAXIMUM (1205)
0x81, 0x02,	// INPUT (Data,Var,Abs)
0x46, 0x8a, 0x03,	// PHYSICAL_MAXIMUM (906)
0x09, 0x31,	// USAGE (Y)
0x81, 0x02,	// INPUT (Data,Var,Abs)
0xc0,	// END_COLLECTION
0x05, 0x0d,	// USAGE_PAGE (Digitizers)
0x09, 0x54,	// USAGE (Actual count)
0x95, 0x01,	// REPORT_COUNT (1)
0x75, 0x08,	// REPORT_SIZE (8)
0x81, 0x02,	// INPUT (Data,Var,Abs)
0x85, REPORTID_MAX_COUNT,	// REPORT_ID (Feature)
0x09, 0x55,	// USAGE (Maximum Count)
0x25, 0x02,	// LOGICAL_MAXIMUM (2)
0xb1, 0x02,	// FEATURE (Data,Var,Abs)
0xc0,	// END_COLLECTION

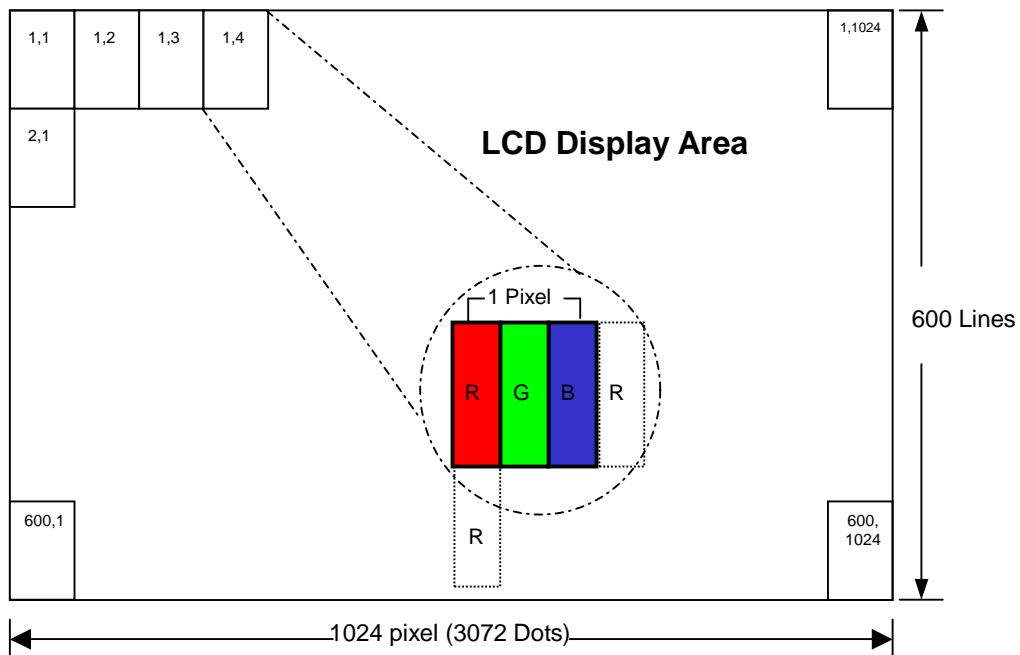
Document Title	HSD101PFW3-D00-C Formal Specification	Page No.	14/33
Document No.	DC140-000753	Revision	1.0

### 5.0 BLOCK DIAGRAM

#### 5.1 TFT LCD Module:



#### 5.2 Pixel Format



Document Title	HSD101PFW3-D00-C Formal Specification	Page No.	15/33
Document No.	DC140-000753	Revision	1.0

### 5.3 Relationship Between Displayed Color and Input

	Display	MSB						LSB						Gray scale level							
		R5	R4	R3	R2	R1	R0	G5	G4	G3	G2	G1	G0		B5	B4	B3	B2	B1	B0	
Basic color	Black	L	L	L	L	L	L	L	L	L	L	L	L	L	L	L	L	L	L	-	
	Blue	L	L	L	L	L	L	L	L	L	L	L	L	H	H	H	H	H	H	-	
	Green	L	L	L	L	L	L	H	H	H	H	H	H	L	L	L	L	L	L	-	
	Light Blue	L	L	L	L	L	L	H	H	H	H	H	H	H	H	H	H	H	H	-	
	Red	H	H	H	H	H	H	L	L	L	L	L	L	L	L	L	L	L	L	-	
	Purple	H	H	H	H	H	H	L	L	L	L	L	L	H	H	H	H	H	H	-	
	Yellow	H	H	H	H	H	H	H	H	H	H	H	H	L	L	L	L	L	L	-	
	White	H	H	H	H	H	H	H	H	H	H	H	H	H	H	H	H	H	H	-	
Gray scale of Red	Black	L	L	L	L	L	L	L	L	L	L	L	L	L	L	L	L	L	L	L0	
	Dark ↑ ↓ Light	L	L	L	L	L	H	L	L	L	L	L	L	L	L	L	L	L	L	L1	
		L	L	L	L	L	H	L	L	L	L	L	L	L	L	L	L	L	L	L2	
		⋮	⋮	⋮	⋮	⋮	⋮	⋮	⋮	⋮	⋮	⋮	⋮	⋮	⋮	⋮	⋮	⋮	⋮	⋮	L3...L60
		H	H	H	H	L	H	L	L	L	L	L	L	L	L	L	L	L	L	L61	
	H	H	H	H	H	L	L	L	L	L	L	L	L	L	L	L	L	L	L62		
	Red	H	H	H	H	H	H	L	L	L	L	L	L	L	L	L	L	L	L	Red L63	
	Gray scale of Green	Black	L	L	L	L	L	L	L	L	L	L	L	L	L	L	L	L	L	L	L0
Dark ↑ ↓ Light		L	L	L	L	L	L	L	L	L	L	L	H	L	L	L	L	L	L	L1	
		L	L	L	L	L	L	L	L	L	L	L	H	L	L	L	L	L	L	L2	
		⋮	⋮	⋮	⋮	⋮	⋮	⋮	⋮	⋮	⋮	⋮	⋮	⋮	⋮	⋮	⋮	⋮	⋮	⋮	L3...L60
		L	L	L	L	L	L	H	H	H	H	L	H	L	L	L	L	L	L	L61	
L		L	L	L	L	L	H	H	H	H	H	L	L	L	L	L	L	L	L62		
Green		L	L	L	L	L	L	H	H	H	H	H	H	L	L	L	L	L	Green L63		
Gray scale of Blue		Black	L	L	L	L	L	L	L	L	L	L	L	L	L	L	L	L	L	L	L0
	Dark ↑ ↓ Light	L	L	L	L	L	L	L	L	L	L	L	L	L	L	L	L	L	H	L1	
		L	L	L	L	L	L	L	L	L	L	L	L	L	L	L	L	H	L	L2	
		⋮	⋮	⋮	⋮	⋮	⋮	⋮	⋮	⋮	⋮	⋮	⋮	⋮	⋮	⋮	⋮	⋮	⋮	⋮	L3...L60
		L	L	L	L	L	L	L	L	L	L	L	L	H	H	H	H	L	H	L61	
	L	L	L	L	L	L	L	L	L	L	L	L	H	H	H	H	H	L	L62		
	Blue	L	L	L	L	L	L	L	L	L	L	L	L	H	H	H	H	H	Blue L63		
	Gray scale of White & Black	Black	L	L	L	L	L	L	L	L	L	L	L	L	L	L	L	L	L	L	L0
Dark ↑ ↓ Light		L	L	L	L	L	H	L	L	L	L	L	H	L	L	L	L	L	H	L1	
		L	L	L	L	L	H	L	L	L	L	H	L	L	L	L	L	H	L	L2	
		⋮	⋮	⋮	⋮	⋮	⋮	⋮	⋮	⋮	⋮	⋮	⋮	⋮	⋮	⋮	⋮	⋮	⋮	⋮	L3...L60
		H	H	H	H	L	H	H	H	H	H	L	H	H	H	H	H	L	H	L61	
H		H	H	H	H	L	H	H	H	H	H	L	H	H	H	H	H	L	L62		
White	H	H	H	H	H	H	H	H	H	H	H	H	H	H	H	H	H	White L63			

Document Title	HSD101PFW3-D00-C Formal Specification	Page No.	16/33
Document No.	DC140-000753	Revision	1.0

## 6 INTERFACE PIN CONNECTION

6.0 TFT LCD Module : **CN1** (Input signal): IPEX 20455-040E-12 (IPEX or equivalent)

Pin	Signal	Description
1	GND	Ground
2	AVDD	PowerSupply,3.3V(typical)
3	AVDD	PowerSupply,3.3V(typical)
4	DVDD	DDC3.3V power
5	CABC_EN	CABC function enable/disable Default 0: Disable
6	SCL	DDC Clock
7	SDA	DDC Data
8	Rin0-	- LVDSdifferential data input
9	Rin0+	+ LVDSdifferential data input
10	GND	Ground
11	Rin1-	- LVDSdifferential data input
12	Rin1+	+ LVDSdifferential data input
13	GND	Ground
14	Rin2-	- LVDSdifferential data input
15	Rin2+	+ LVDSdifferential data input
16	GND	Ground
17	CIKIN-	- LVDSdifferential data input
18	CIKIN+	+ LVDSdifferential data input
19	GND	Ground
20	VDDA_EN	VDDA on/off
21	NC	No Connection
22	GND	Ground
23	NC	No Connection
24	NC	No Connection
25	GND	Ground
26	NC	No Connection
27	NC	No Connection
28	GND	Ground
29	NC	No Connection
30	NC	No Connection
31	VLED_GND	LED Ground
32	VLED_GND	LED Ground
33	VLED_GND	LED Ground
34	NC	No Connection
35	PWM	System PWM Signal Input
36	VLED_EN	LED enable pin(+3.3V input)/VLED on/off



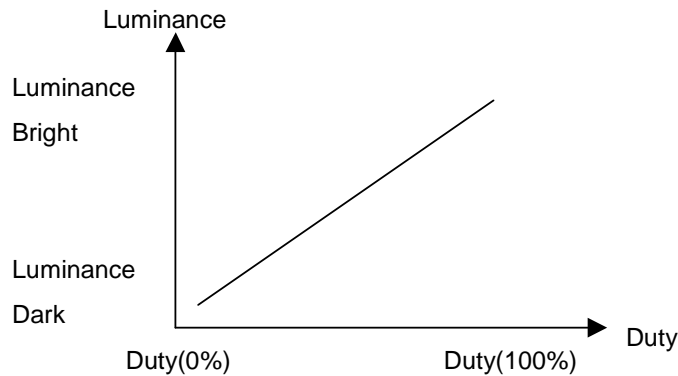
Document Title	HSD101PFW3-D00-C Formal Specification	Page No.	17/33
Document No.	DC140-000753	Revision	1.0

37	NC	No Connection
38	VLED	LED Power Supply5V
39	VLED	LED Power Supply5V
40	VLED	LED Power Supply5V

**Note :** The brightness of LCD panel could be changed by adjusting PWM

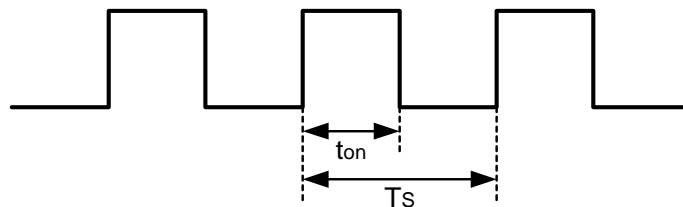
**[Note]**

**(1) ADJ can adjust brightness to control Pin. Pulse duty the bigger the brighter.**



**(2) ADJ Signal=0~3.3V · Operation Conditions :**

Parameter	Symbol	Conditions	Min	Typ	Max	Unit
ADJ Logic-High Level	$V_{ADJH}$		1.8	3.3	3.6	V
ADJ Logic-Low Level	$V_{ADJL}$		0	0	0.4	V
Dimming Frequency	$F_{ADJ}$		18	20	22	kHz
Dimming Duty Cycle	D		20	--	100	%



$$D = t_{on} / T_s \times 100\%$$

$$F_{ADJ} = 1 / T_s$$

Document Title	HSD101PFW3-D00-C Formal Specification	Page No.	18/33
Document No.	DC140-000753	Revision	1.0

**(3) VLED\_EN & VDDA\_EN & CABC\_EN · Operation Conditions :**

Parameter	Symbol	Min	Typ	Max	Units	Remark
LED enable pin (control LED driver circuit on/off)	LED_EN (H)	3.0	3.3	3.6	Volt	LED on
	LED_EN (L)	--	0	0.2		LED off
VDD on/off signal (control Panel VDD power source on/off)	VDDA_EN (H)	3.0	3.3	3.6	Volt	VDD on
	VDDA_EN (L)	--	0	0.2		VDD off
CABC on/off signal (control CABC Function on/off)	CABC_EN (H)	3.0	3.3	3.6	Volt	CABC on
	CABC_EN (L)	--	0	0.2		CABC off

Document Title	HSD101PFW3-D00-C Formal Specification	Page No.	19/33
Document No.	DC140-000753	Revision	1.0

## 7 ELECTRICAL CHARACTERISTICS

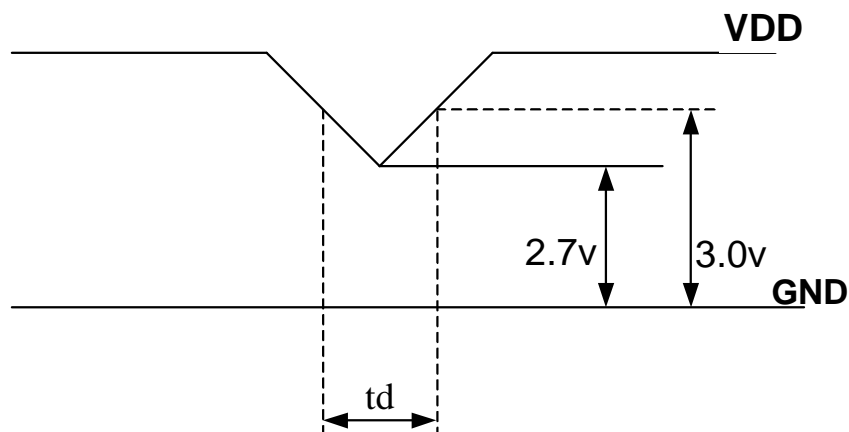
### 7.0 TFT LCD Module

Item	Symbol	Min.	Typ.	Max.	Unit	Note
Supply Voltage	V <sub>DD</sub>	3.0	3.3	3.6	V	Note (1)
Current of power supply	I <sub>DD</sub>	-	(0.19)	-	A	V <sub>DD</sub> =3.3V Ta=25°C fv=60Hz Note (2)(3)
Inrush current	I <sub>RUSH</sub>	-	-	1.50	A	Note (4)

**Note** : (1) V<sub>DD</sub>-dip condition :

When VDD operating within  $2.7V \leq VDD < 3.0V$  ,  $t_d \leq 10ms$  , the display may momentarily become abnormal .

VDD<2.7V, VDD dip condition should also follow the Power On/Off conditions for supply voltage.

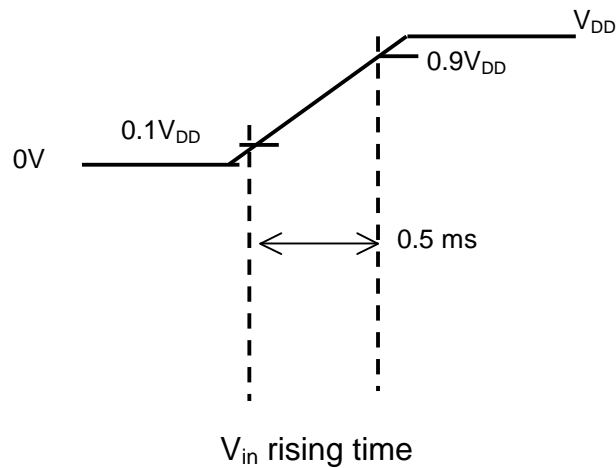
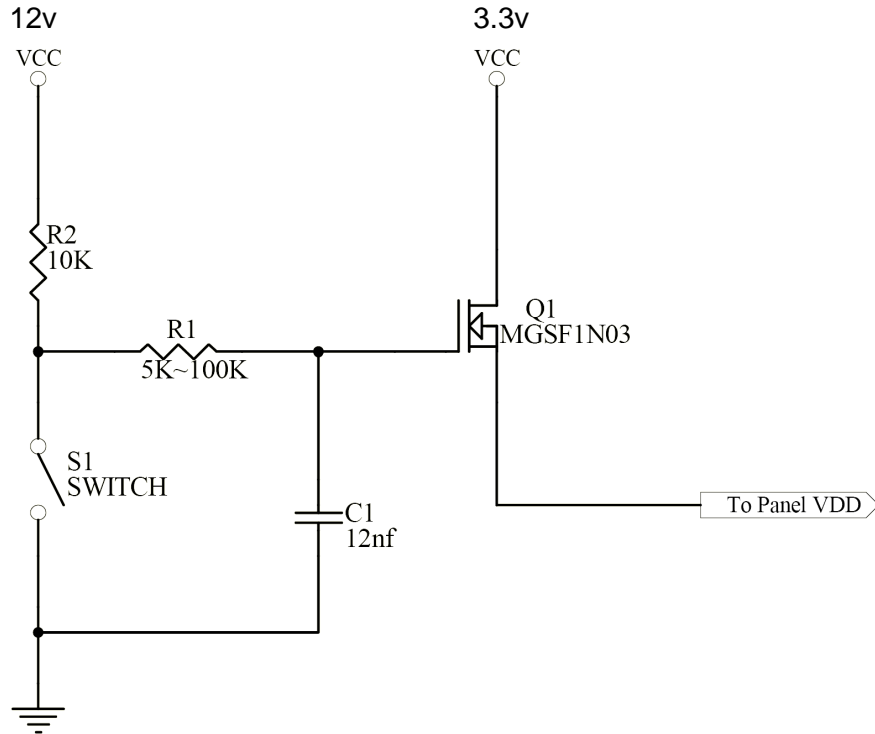


(2) Maximum Measurement Condition: Black Pattern

(3) Typical Measurement Condition: Mosaic Pattern

Document Title	HSD101PFW3-D00-C Formal Specification	Page No.	20/33
Document No.	DC140-000753	Revision	1.0

(4) Power on Inrush current test circuit

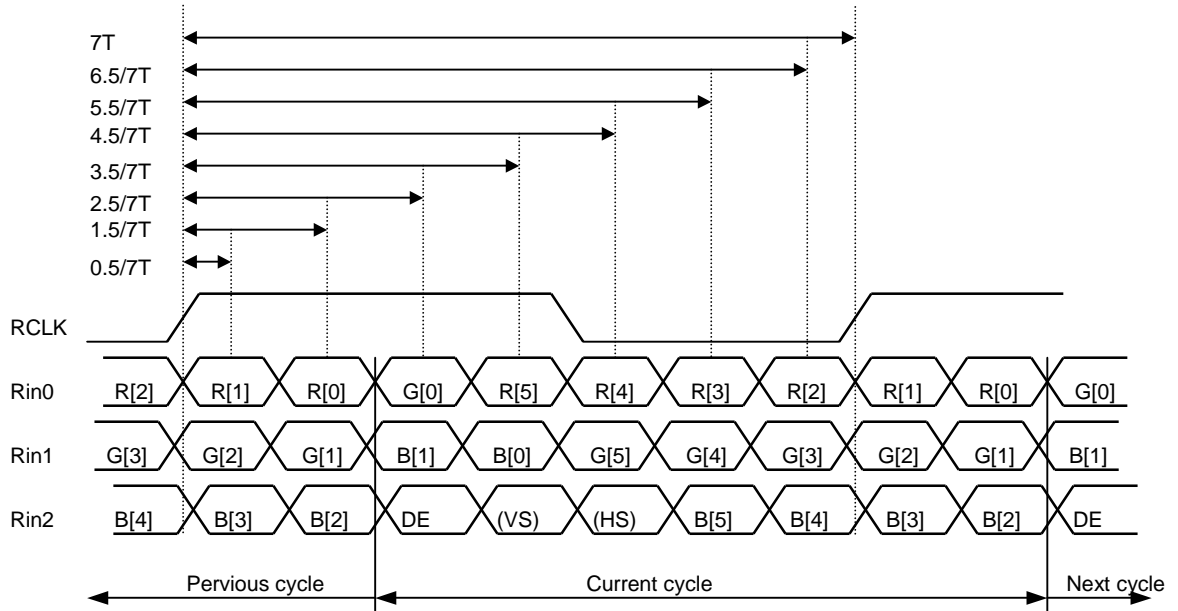


Document Title	HSD101PFW3-D00-C Formal Specification	Page No.	21/33
Document No.	DC140-000753	Revision	1.0

### 7.1 Switching Characteristics for LVDS Receiver

Item	Symbol	Min.	Typ.	Max.	Unit	Conditions
Differential Input High Threshold	$V_{th}$	—	—	100	mV	$V_{CM}=1.2V$
Differential Input Low Threshold	$V_{tl}$	-100	—	—	mV	
Input Current	$I_{IN}$	-10	—	+10	$\mu A$	
Differential input Voltage	$ V_{ID} $	0.1	—	0.6	V	
Common Mode Voltage Offset	$V_{CM}$	0.7	1.2	1.6	V	

### 7.2 Bit Mapping & Interface Definition



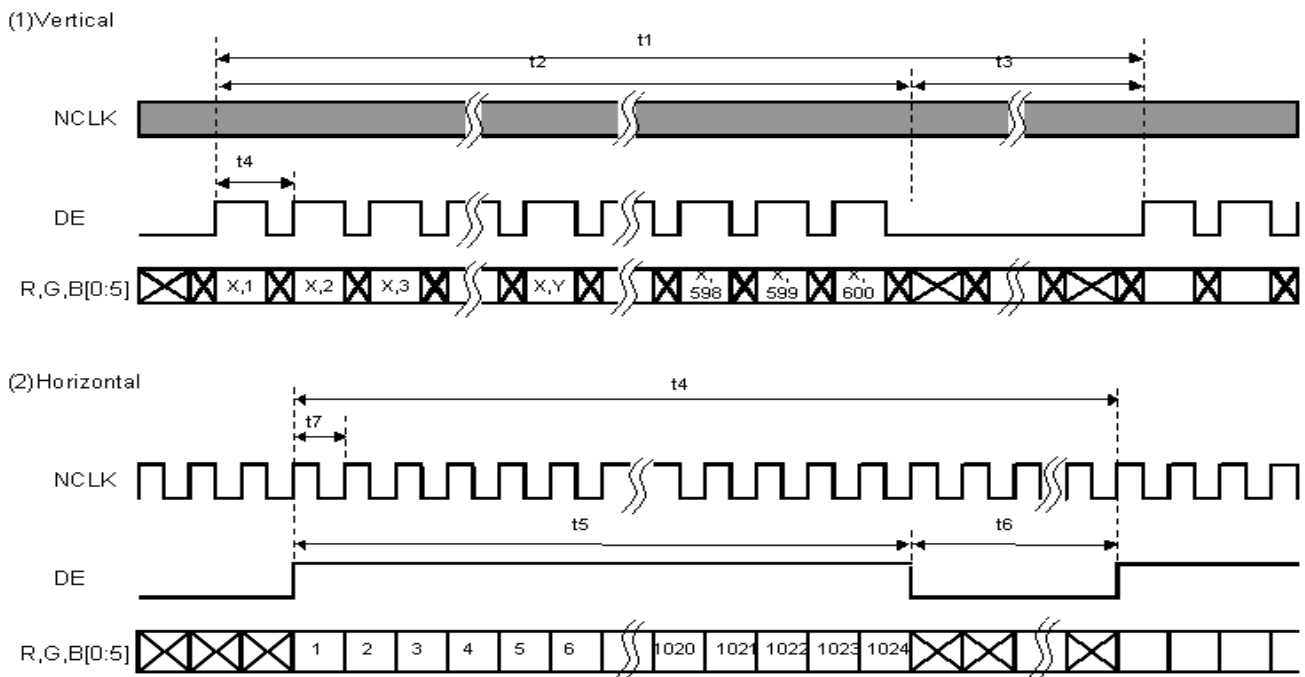
LVDS Receiver Input Timing Definition  
for 6bits LVDS input

Document Title	HSD101PFW3-D00-C Formal Specification	Page No.	22/33
Document No.	DC140-000753	Revision	1.0

### 7.3 Interface Timing (DE mode)

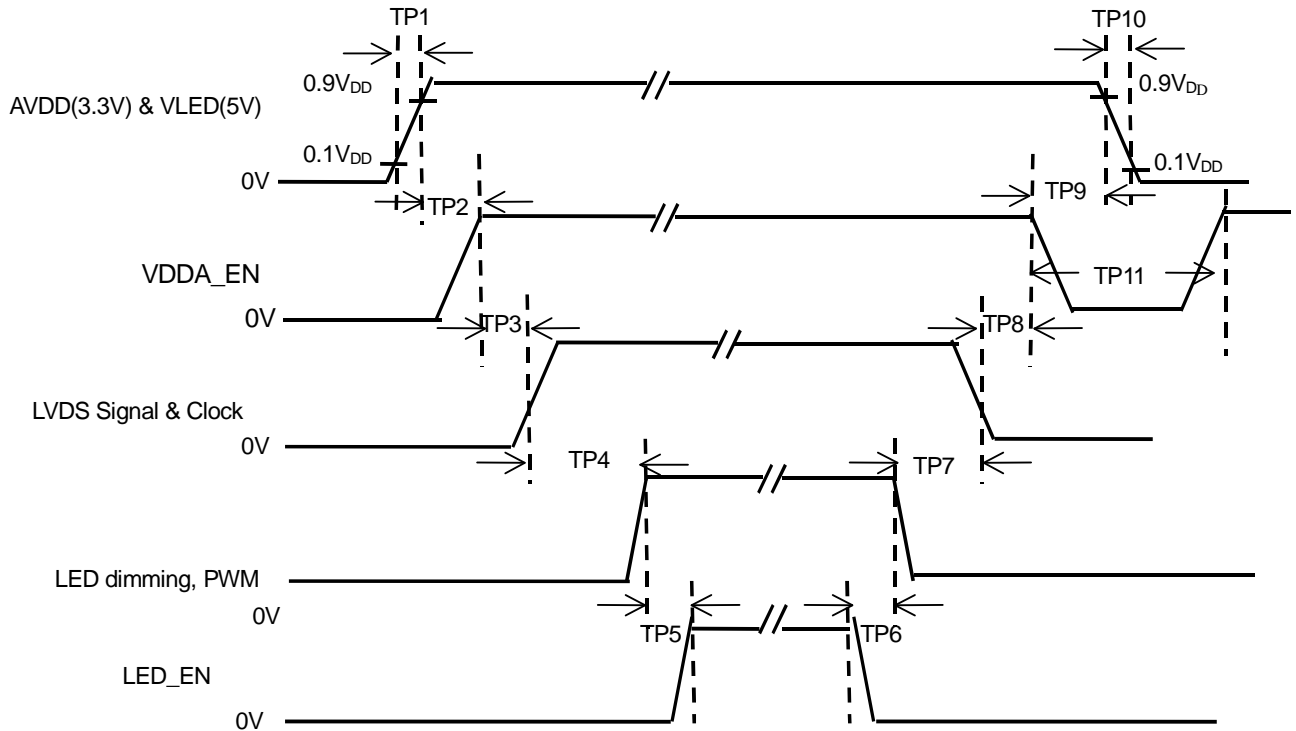
Item	Symbol	Min.	Typ.	Max.	Unit
Frame Rate	--	55	60	65	Hz
Frame Period	t1	612	625	638	line
Vertical Display Time	t2	600	600	600	line
Vertical Blanking Time	t3	12	25	38	line
1 Line Scanning Time	t4	1160	1200	1240	clock
Horizontal Display Time	t5	1024	1024	1024	clock
Horizontal Blanking Time	t6	136	176	216	clock
Clock Rate	t7	39	45	51.42	MHz

#### Timing Diagram of Interface Signal (DE mode)



Document Title	HSD101PFW3-D00-C Formal Specification	Page No.	23/33
Document No.	DC140-000753	Revision	1.0

### 7.4 Power On / Off Sequence



Item	Min.	Typ.	Max.	Unit	Remark
TP1	0.5	--	10	msec	
TP2	10	--	--	msec	
TP3	30	40	90	msec	
TP4	200	--	--	msec	
TP5	10	--	--	msec	
TP6	0	--	--	msec	
TP7	110	--	--	msec	
TP8	0	16	80	msec	
TP9	0	--	--	msec	Must exceed 0
TP10	--	10	30	msec	
TP11	1000	--	--	msec	

Document Title	HSD101PFW3-D00-C Formal Specification	Page No.	24/33
Document No.	DC140-000753	Revision	1.0

- Note: (1) The supply voltage of the external system for the module input should be the same as the definition of  $V_{DD}$ .
- (2) Apply the lamp voltage within the LCD operation range. When the back-light turns on before the LCD operation or the LCD turns off before the back-light turns off, the display may momentarily become white.
- (3) In case of  $V_{DD}$  = off level, please keep the level of input signal on the low or keep a high impedance.
- (4) TP4 should be measured after the module has been fully discharged between power off and on period.
- (5) Interface signal shall not be kept at high impedance when the power is on.

### 7.5 Backlight Unit

Parameter	Symbol	Min	Typ	Max	Units	Condition
LED Current	$I_F$	--	(20)	(20.6)	mA	$T_a=25^{\circ}C$
LED Voltage	$V_F$	3.1	3.3	3.5	Volt	$T_a=25^{\circ}C$
LED Power consumption	$P_{LED}$	--	1.98	2.16	Watt	$T_a=25^{\circ}C$ Note (1)
LED Life-Time	N/A	10,000	--	--	Hour	$T_a=25^{\circ}C$ $I_F=20mA$ Note (2)

**Note (1):** Calculator value for reference  $P=I_F \times V_F \times N$  (LED Qty')

**Note (2):** The LED lifetime defines as the estimated time to 50% degradation of final luminous.

### 7.6 LED Driver

#### 7.6.1 Absolute Maximum Ratings

Item	Symbol	Min.	Max.	Unit	Note
LED Power Supply voltage	$V_{LED}$	-0.3	6	Volt	
LED_EN, PWM pin Voltage	$V_{EN}, V_{PWM}$	--	5.5	Volt	



Document Title	HSD101PFW3-D00-C Formal Specification	Page No.	25/33
Document No.	DC140-000753	Revision	1.0

### 7.6.2 DC Electrical Characteristics

Parameter	Symbol	Min	Typ	Max	Units	Remark
LED Power Supply Voltage	$V_{LED}$	4.5	--	5.5	Volt	
PWM High Threshold	$V_{PWMH}$	3.0	--	--	Volt	
PWM Low Threshold	$V_{PWML}$	--	--	0.2	Volt	

### 7.7 CABC DC Electrical Characteristics

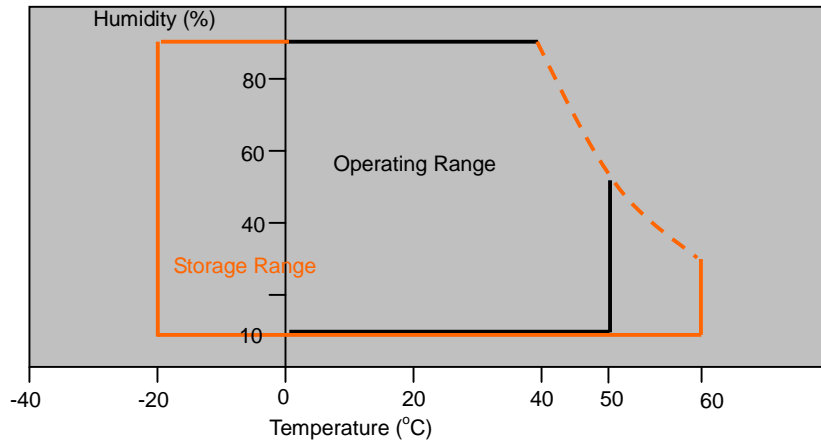
Parameter	Symbol	Min	Typ	Max	Units	Remark
CABC_EN High Threshold	$V_{CABCH}$	$0.7V_{DD}$	--	--	Volt	
CABC_EN Low Threshold	$V_{CABCL}$	--	--	$0.3V_{DD}$	Volt	

Document Title	HSD101PFW3-D00-C Formal Specification	Page No.	26/33
Document No.	DC140-000753	Revision	1.0

### 8.0 Reliability test items

No.	Item	Conditions	Remark
1	High Temperature Storage	Ta=+60°C, 240hrs	
2	Low Temperature Storage	Ta=-20°C, 240hrs	
3	High Temperature Operation	Ta=+50°C, 500hrs	
4	Low Temperature Operation	Ta=0°C, 500hrs	
5	Thermal Cycling Test (non operation)	-20°C(30min)→+60°C(30min),100 cycles	
6	Vibration	Sine Wave 1.5G, 5~500Hz, XYZ 30min/each direction	
7	Shock	Half-Sine, 200G, 2ms, ±XYZ, 1time	

#### Storage / Operating temperature



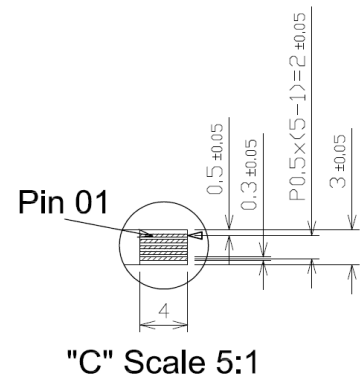
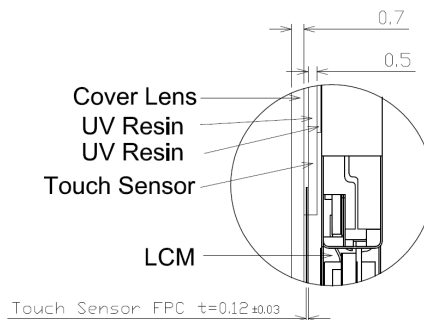
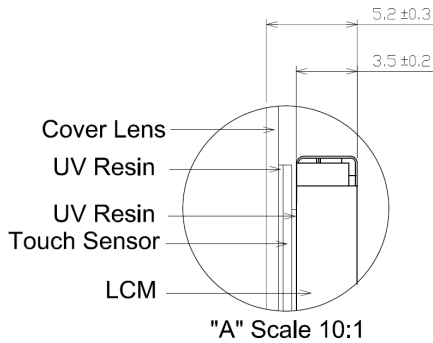
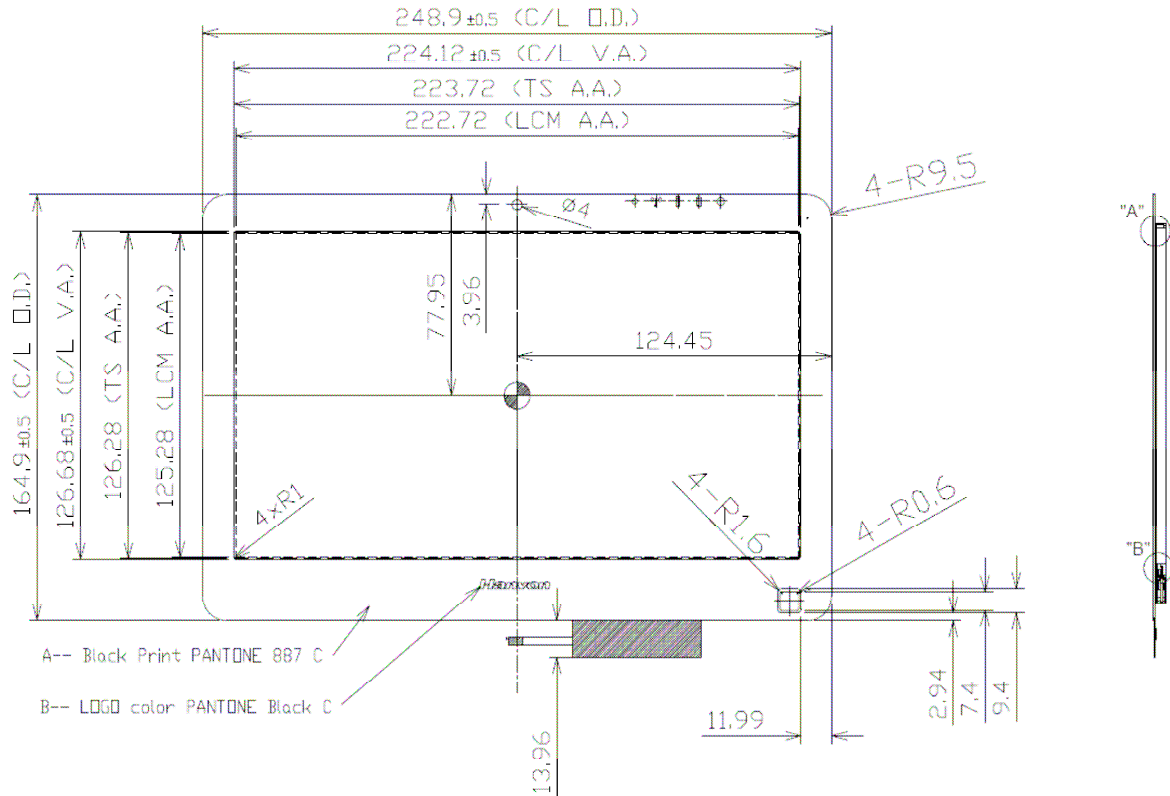
**Note** .Max wet bulb temp.=39°C

Document Title	HSD101PFW3-D00-C Formal Specification	Page No.	27/33
Document No.	DC140-000753	Revision	1.0

### 9.0 OUTLINE DIMENSION

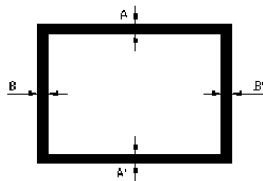
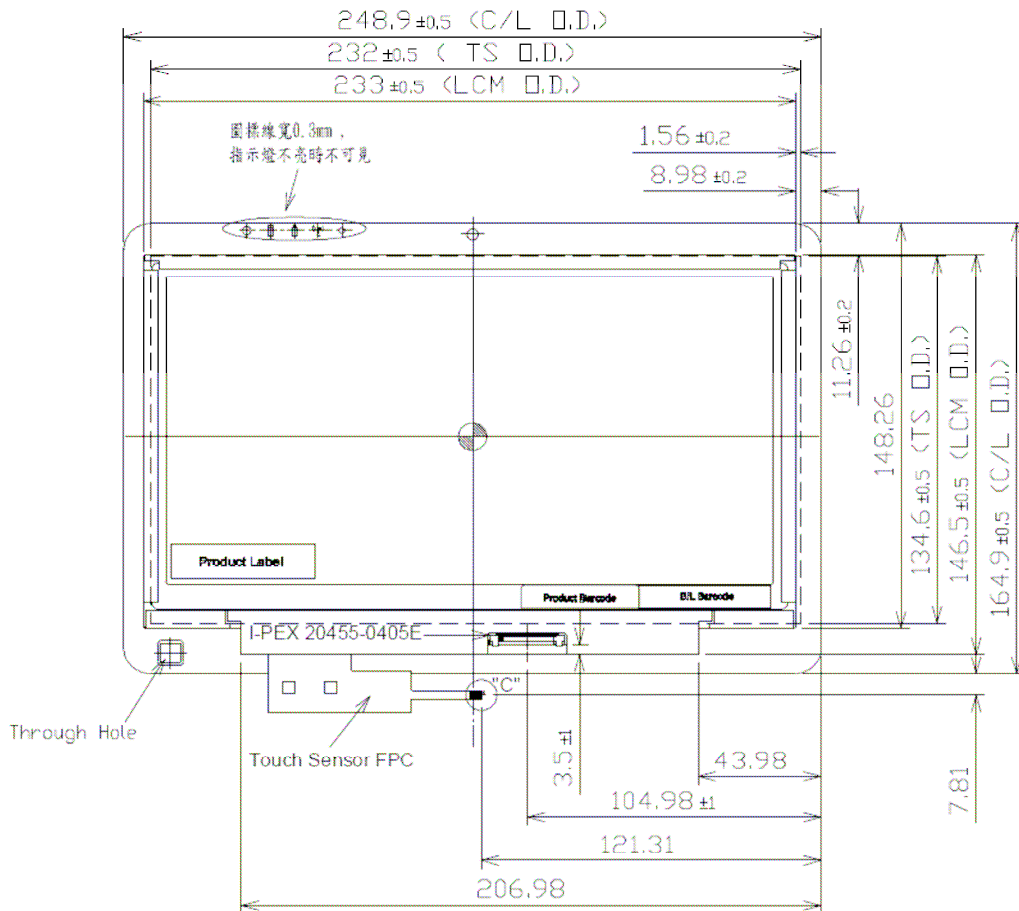
#### 9.1 Front View Outline Dimension

Unit : mm



Document Title	HSD101PFW3-D00-C Formal Specification	Page No.	28/33
Document No.	DC140-000753	Revision	1.0

### 9.2 Back View Outline Dimension



BM Assembly Tolerance

|A-A'| ≤ 1.0 (mm)

|B-B'| ≤ 1.0 (mm)

Document Title	HSD101PFW3-D00-C Formal Specification	Page No.	29/33
Document No.	DC140-000753	Revision	1.0

**10.0 LOT MARK**

**10.1 Lot Mark**

1	2	3	4	5	6	7	8	9	10	11	12	13	14	15
---	---	---	---	---	---	---	---	---	----	----	----	----	----	----

Code 1,2,3,4,5,6: HannStar internal flow control code.

Code 7: production location.

Code 8: production year.

Code 9: production month.

Code 10,11,12,13,14,15: serial number.

**Note (1) Production Year**

Year	2006	2007	2008	2009	2010	2011	2012	2013	2014	2015
Mark	6	7	8	9	0	1	2	3	4	5

**Note (2) Production Month**

Month	Jan.	Feb.	Mar.	Apr.	May.	Jun.	Jul.	Aug.	Sep.	Oct	Nov.	Dec.
Mark	1	2	3	4	5	6	7	8	9	A	B	C

**10.2 Location of Lot Mark**

- (1) Location : The label is attached to the backside of the LCD module. See Product back view. ( Section 8.0 : OUTLINE DIMENSION )
- (2) Detail of the Mark : As attached below
- (3) This is subject to change without prior notice.



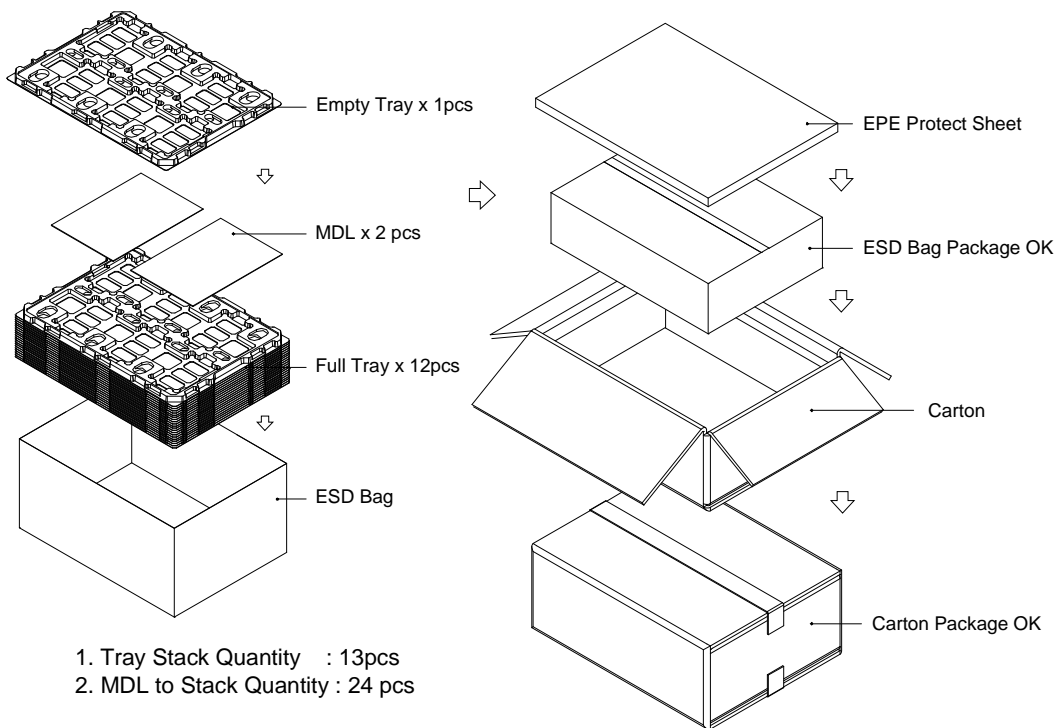
Document Title	HSD101PFW3-D00-C Formal Specification	Page No.	30/33
Document No.	DC140-000753	Revision	1.0

## 10 PACKAGE SPECIFICATION

### 10.1 Packing form

LCM Model	LCM Qty. in the box	Inner Box Size (mm)	Notice
HSD101PFW3-D00-C**	24pcs/box	456x350x87 <sup>(H)</sup>	

### 10.2 Packing assembly drawings



HSD101PFW3-D00-C**	Material	Notice
Box	Corrugated Paper Board	AB Flute
Partition/Pad	Corrugated Paper Board	B Flute
Pad	Corrugated Paper Board	B Flute
Tray	PET	--
EPE	PE	--

Document Title	HSD101PFW3-D00-C Formal Specification	Page No.	31/33
Document No.	DC140-000753	Revision	1.0

## 11 GENERAL PRECAUTION

### 11.1 Use Restriction

This product is not authorized for use in life supporting systems, aircraft navigation control systems, military systems and any other application where performance failure could be life-threatening or otherwise catastrophic.

### 11.2 Disassembling or Modification

Do not disassemble or modify the module. It may damage sensitive parts inside LCD module, and may cause scratches or dust on the display. HannStar does not warrant the module, if customers disassemble or modify the module.

### 11.3 Breakage of LCD Panel

11.3.1. If LCD panel is broken and liquid crystal spills out, do not ingest or inhale liquid crystal, and do not contact liquid crystal with skin.

11.3.2. If liquid crystal contacts mouth or eyes, rinse out with water immediately.

11.3.3. If liquid crystal contacts skin or cloths, wash it off immediately with alcohol and rinse thoroughly with water.

11.3.4. Handle carefully with chips of glass that may cause injury, when the glass is broken.

### 11.4 Electric Shock

11.4.1. Disconnect power supply before handling LCD module.

11.4.2. Do not pull or fold the LED cable.

11.4.3. Do not touch the parts inside LCD modules and the fluorescent LED's connector or cables in order to prevent electric shock.

### 11.5 Absolute Maximum Ratings and Power Protection Circuit

11.5.1. Do not exceed the absolute maximum rating values, such as the supply voltage variation, input voltage variation, variation in parts' parameters, environmental temperature, etc., otherwise LCD module may be damaged.

11.5.2. Please do not leave LCD module in the environment of high humidity and high temperature for a long time.

11.5.3. It's recommended to employ protection circuit for power supply.

### 11.6 Operation

11.6.1 Do not touch, push or rub the polarizer with anything harder than HB pencil lead.

11.6.2 Use fingerstalls of soft gloves in order to keep clean display quality, when persons handle the LCD module for incoming inspection or assembly.

11.6.3 When the surface is dusty, please wipe gently with absorbent cotton or other soft material.

Document Title	HSD101PFW3-D00-C Formal Specification	Page No.	32/33
Document No.	DC140-000753	Revision	1.0

11.6.4 Wipe off saliva or water drops as soon as possible. If saliva or water drops contact with polarizer for a long time, they may cause deformation or color fading.

11.6.5 When cleaning the adhesives, please use absorbent cotton wetted with a little petroleum benzene or other adequate solvent.

### **11.7 Mechanism**

Please mount LCD module by using mounting holes arranged in four corners tightly.

### **11.8 Static Electricity**

11.8.1 Protection film must be removed very slowly from the surface of LCD module to prevent electrostatic occurrence.

11.8.2 Because LCD module uses CMOS-IC on circuit board and TFT-LCD panel, it is very weak to electrostatic discharge. Please be careful with electrostatic discharge. Persons who handle the module should be grounded through adequate methods.

### **11.9 Strong Light Exposure**

The module shall not be exposed under strong light such as direct sunlight. Otherwise, display characteristics may be changed.

### **11.10 Disposal**

When disposing LCD module, obey the local environmental regulations.





Document Title	HSD101PFW3-D00-C Formal Specification	Page No.	33/33
Document No.	DC140-000753	Revision	1.0

## For Specific Customer Revision

### 1.4 General information

Item	Specification	Unit
Outline Dimension	248.9x 164.9 (typ) w/ Cover Lens	mm
Display area	222.72(H) x 125.28(V)	mm
Number of Pixel	1024 RGB (H) x 600(V)	pixels
Pixel pitch	0.2175(H) x 0.2088(V)	mm
Pixel arrangement	RGB Vertical stripe	
Display mode	Normally white	
NTSC	50	%
Weight	(300)(Max.)	g
Back-light	White LED	
Power Consumption	(3.15) (Max)	W